

FLORIDA AGRICULTURAL STATISTICS

Citrus Summary 1992-93

FLORIDA DEPARTMENT OF AGRICULTURE
AND CONSUMER SERVICES

BOB CRAWFORD, COMMISSIONER

FLORIDA AGRICULTURAL
STATISTICS SERVICE

Robert L. Freie, State Statistician

DIVISION OF MARKETING
AND DEVELOPMENT

Nelson L. Pugh, Director

Cooperating with

U.S. Department of Agriculture
Agricultural Marketing Service
and
National Agricultural Statistics Service

ACKNOWLEDGMENT

The acreage, production, utilization, monthly and season average price, and crop value statistics for Florida as shown in this summary are official estimates of the Florida Agricultural Statistics Service. Corresponding data for other citrus states are from official reports of the USDA, National Agricultural Statistics Service. Canned and frozen pack statistics were compiled by the Florida Citrus Processors Association. Where data are from other sources, appropriate references appear.

Records of the Division of Fruit and Vegetable Inspection, Florida Department of Agriculture and Consumer Services, were used in preparing production and utilization estimates. The Citrus Administrative Committee assisted in assembling these data.

Many producers, shippers, processors, sales agencies, transportation firms, and others associated with the citrus industry voluntarily supplied basic data used to develop these statistics. Their contributions are sincerely appreciated.

This report was assembled under the direction of Robert R. Terry, Candice T. Erick, and Elise E. Leiphart of the Florida Agricultural Statistics Service.

For information call: (407) 648-6015.

Published January 1994

CONTENTS

	Page		Page
Narrative on 1992-93 season		Colored seedless grapefruit	22
Weather highlights	1	Limes	23
Production summary	2	Tangelos	24
Value and prices	3	K-Early Citrus Fruit	24
Citrus production, 1886 to date and history of Florida citrus industry	4	Temples	24
Citrus acreage and production, by states		Early tangerines	25
Principal citrus fruits	5	Dancy tangerines	25
Oranges	6	Honey tangerines	25
Grapefruit	7	Florida production, by counties and fruit types	26
Florida acreage, yield, production, utilization, season average on-tree price, and value of sales		Florida citrus, commercial acreage, by counties and fruit types	27
All oranges	8	Florida citrus, commercial trees, by counties and fruit types	28
Early and midseason oranges	8	Other states' citrus acreage	29
Late (Valencia) oranges	9	Citrus received by major cities	
Temples	9	Oranges and tangerines	30
All grapefruit	10	Grapefruit, tangelos, and Temples	31
Seedy grapefruit	10	Citrus fresh shipments by states and imports to U.S.	
White seedless grapefruit	11	Oranges	32
Colored seedless grapefruit	11	Grapefruit	33
Tangelos	12	Tangerines, tangelos, Temples and K-Earlyls	34
All tangerines	12	Citrus fresh exports by states	
Limes	13	Oranges, tangelos, and Temples	35
Florida seedless grapefruit bearing acreage, by types	13	Grapefruit and tangerines	36
Citrus production, utilization, season average on-tree prices, and value of sales		Exports of fresh U.S. citrus, by destinations and months	37
Oranges, by states	14	Exports of fresh Florida citrus, by weeks and types	38
Oranges, by types and states, and Florida Temples	15	Exports of fresh Florida citrus, by seasons and types	39
Grapefruit, by states	16	Exports of fresh Florida citrus, by destinations and types	39
Tangerines, by states	17	Processed fruit utilization, by weeks	
Other citrus, limes, and lemons, by states	18	Oranges, grapefruit, and Temples	40
Florida lemons, by types	18	Tangelos, tangerines, Honey tangerines, and K-Earlyls	41
Florida grapefruit, by marketing districts		Distribution of fruit utilization, by types and months	42
Production	19	National per capita consumption of citrus	43
Season average on-tree prices	19	Florida FCOJ yields, by types	43
Florida citrus products, annual pack	20	Production of citrus fruit, by counties and crop years	44
Florida monthly and season average on-tree prices		Data sources	45
Early and midseason oranges	21		
Late (Valencia) oranges	21		
White seedless grapefruit	22		

FLORIDA WEATHER HIGHLIGHTS, SELECTED AREAS, AND MONTHS, 1992-93

The 1992-93 season weather was often near ideal except for rainfall during some of 1993. Trees were in excellent condition as bloom buds formed. Cool nighttime temperatures in March 1992 prolonged the bloom period.

Trees and fruit began winter in near excellent condition. Temperatures dropped to the mid-30's on several mornings. The low temperatures slowed tree growth. Irrigation was used to maintain tree condition during a dry December. January 1993 was noted for unseasonably mild days and heavy mid-month rains which covered the citrus belt. Temperatures were almost ideal for pickers and grove workers.

Spring rains in April resulted in abundant new growth. Dry conditions, coupled with warm daytime temperatures in May caused stress in some trees.

By February, cooler weather had returned. Rain was adequate as the bloom buds were forming. A fast moving storm with high winds caused limited fruit droppage in March. The lower East Coast was very wet.

June brought heavy rains and adequate subsurface soil moisture. Tree condition improved allowing new growth as the fruit progressed. More heavy rains arrived at the end of the month. With summer came hot weather (record and near record high temperatures) and afternoon rains. Trees were in near excellent condition.

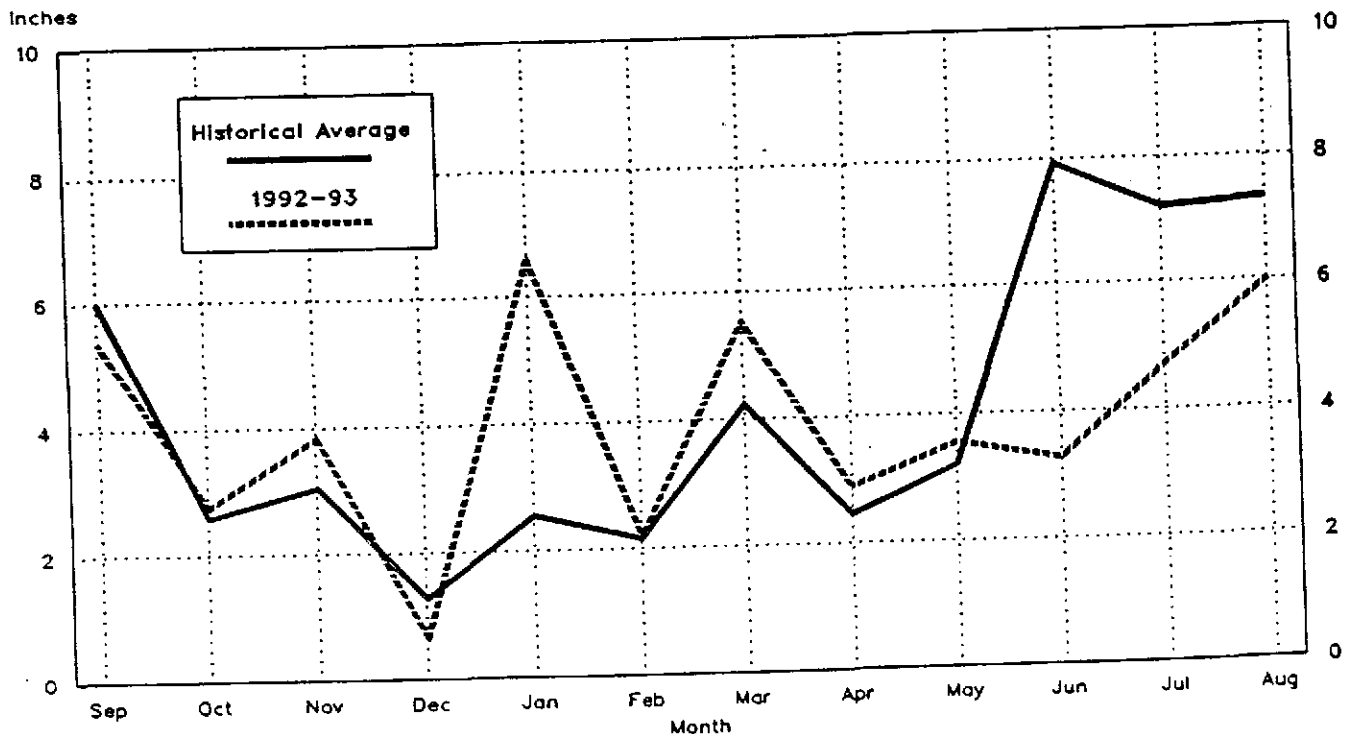
The weather grew sunny and warmer by the end of April. Rain was lacking until late in the month of May. Trees had returned to very good condition by June but development was slowed by hot and dry conditions. Late June summer rains helped but rainfall was still well below average. The season was nearing completion although harvest trickled on into July.

In August, citrus was spared the devastating effects of Hurricane Andrew as it passed over the south Florida lime and avocado growing region. Rainfall was near normal in September and there was an abundance of new growth on the trees.

In the chart below, the 1992-93 monthly rainfall is compared to the historical average which includes data from two stations in each of the citrus producing areas. The ten stations are: Avon Park, Clermont, Clewiston (AG), Immokalee, Lake Alfred, Orlando, Plant City, Ruskin, Stuart, and Very Beach (4W).

October began as a wet month and had above average rainfall. Lakes and ponds were replenished and levels were the highest in recent years. New growth slowed as nighttime temperatures cooled. November recorded rainfall above normal. Some areas were wet and soggy but the well-drained high sand hill groves had very few moisture problems.

**FLORIDA PRECIPITATION: Average monthly rainfall, ten selected stations,
1984-85 through 1991-92 and 1992-93**



1992-93 PRODUCTION AND TREE CENSUS

PRODUCTION

Florida citrus rebounded dramatically in the 1992-93 season with production of all varieties totaling 251.4 million boxes. This was the third largest crop and the most since the record harvest of nearly 284 million boxes in 1979-80. Production was 31 percent above the previous year, largely reflecting a low fruit set in 1991-92 and the increasing number and productivity of young bearing trees.

Orange production at 186.5 million boxes is up 33 percent. Included in the total are 4.8 million boxes of Navels, which surpass the record of the past two seasons by 1.1 million boxes.

Harvested grapefruit reached a record 55.15 million boxes with the colored varieties contributing a record 27.7 million boxes to the total. Seedy grapefruit increased to 1.75 million boxes and white seedless grapefruit was up to 25.7 million boxes.

Early tangerine production has increased as more of the Sunburst trees reach bearing age. Production of the other specialty varieties was also up except for Dancy tangerines, lemons, and limes. Lime production was reduced by Hurricane Andrew in August 1992, with minimal shipments after the storm.

The FCOJ final yields for the first non-factored season were at or near record levels. Setting records were the early and midseason oranges at 1.52480 and all oranges at 1.57893 gallons per box. The late type (Valencia) portion of the crop at 1.68686 gallons per box nearly equaled the previous season's record.

California's total orange production showed a small gain. The 25 percent increase in the Navel portion was offset by a 23 percent decrease in the Valencia crop. Grapefruit production in the Desert Valley held steady at 3.5 million boxes for the fifth season in a row. However, production in the other areas was down 500,000 boxes.

Arizona's production of citrus was down over twenty percent from the previous season. The orange crop decreased to 1,850,000 boxes and the grapefruit totaled 2,150,000 boxes.

Texas continued to rebound from the 1989 freeze with tremendous increases in production. The orange harvest was 510,000 boxes and grapefruit production rose to 1,875,000 boxes.

CITRUS BOX WEIGHTS: Approximate net weight in pounds by fruit type and states

States	Oranges	Grapefruit	Tangerines	Lemons	Limes
FL	90 ^{1/}	85	95	90	88
CA	75	65	75	76	--
TX	85	80	--	--	--
AZ	75	64	75	76	--

^{1/} Includes Temples and tangelos at 90 lbs.

TREE CENSUS

The Florida Agricultural Statistics Service first indexed the State's commercial citrus groves on aerial photography as of January 1966. Ground crews identify all the State's groves by fruit type, row spacing, and year in which set. Photo interpreters in the Orlando office then delineate the groves by variety blocks on photo transparencies at a scale of 1 inch to 660 feet. Variety blocks are measured with planimeters to obtain acreage and then indexed by land section.

The design of the inventory survey allows for quick and economical updating. Since 1966, the citrus belt has been resurveyed each second winter (1968 through 1992) to determine changes. Photographing begins in November when weather conditions are most favorable and is generally completed in 80 to 90 days. The same three-mile-wide flight lines established in 1966 are photographed on each succeeding flight. Approximately 14,000 square miles of photography are obtained at a 1 to 30,000 scale.

The last statewide survey was conducted as of January 1992. Through 1991, all types of citrus planted totaled 791,290 acres, up 8 percent from the 732,767 acres recorded in January 1990. Increases were highest in lower interior counties. The Northern Area showed recovery from the 1989 freeze as acreage increased by one-third. Acreage by counties and types is shown on page 27.

Photography for the next survey began November 1993, and field work will update the acreage records as of January 1994.

FLORIDA, ALL CITRUS: Acres in commercial groves as of January 1966-1992, with percent changes

Year	Acres	Percent change from	
		Previous survey	1966 survey
1966	858,082	--	--
1968	931,249	+8.5	+8.5
1970	941,471	+1.1	+9.7
1972	878,019	-6.7	+2.3
1974	864,098	-1.6	+0.7
1976	852,369	-1.4	-0.7
1978	831,235	-2.5	-3.1
1980	845,283	+1.7	-1.5
1982	847,856	+0.3	-1.2
1984	761,365	-10.2	-11.3
1986	624,492	-18.0	-27.2
1988	697,929	+11.8	-18.7
1990	732,767	+5.0	-14.6
1992	791,290	+8.0	-7.8

1992-93 VALUE OF SALES, PRICES, AND EXPORTS

VALUE

The preliminary on-tree value of all citrus for the 1992-93 season is \$695 million, down 43 percent from last season's revised \$1.209 billion. The record high 1987-88 season value was \$1.443 billion.

Preliminary value is based on that part of the crop priced at harvest, which amounts to all of the fresh fruit and about 41 percent of the processed. When all participation plans and cooperative pools are finalized, a revised value will be calculated.

Preliminary orange on-tree prices are down from a revised \$5.93 in 1991-92 to \$2.67 this season. Fresh and processed fruit returns were down to less than half of the previous season's.

Grapefruit prices were down substantially for seedy and seedless varieties. Processed fruit was affected more than the fresh.

Both fresh and processed prices for Temples, tangelos, limes, lemons, and all tangerine varieties decreased. Only the fresh K-Early Citrus price showed an increase over the revised 1991-92 price.

The season average delivered-in price of fruit going into FCOJ as reported by the Florida Citrus Processors Association is \$4.45 per box or \$0.68 per pound of solids. Early-mids averaged \$4.05 per box or \$0.64 per pound of solids and late oranges averaged \$5.19 per box and \$0.74 per pound.

FLORIDA, ALL CITRUS: Value of sales on-tree,
crop years 1983-84 through 1992-93

Crop year	Value 1,000 dol.	Crop Year	Value 1,000 dol.
1983-84	849,457	1988-89	1,429,808
1984-85	984,820	1989-90	952,303
1985-86	725,035	1990-91	1,236,126
1986-87	941,078	1991-92 ^{1/}	1,208,944
1987-88	1,443,116	1992-93 ^{2/}	694,695

^{1/} Revised. ^{2/} Preliminary.

FOREIGN EXPORTS

Fresh fruit exports totaled 23,376,000 4/5 bushel cartons, down slightly from last season. Canada accounts for the most receipts of Florida oranges and specialty fruit while Japan receives the most grapefruit.

A total of 14.5 million gallons of FCOJ were exported, mostly to Canada. There were also 5.1 million gallons of FCGJ exported.

PRICES

All on-tree prices represent the average price received by growers for their fruit by types. Prices are based on records of commercial fresh fruit sales and processed fruit returns. The term "on-tree" relates to fruit returns to the grower after the costs of picking, hauling, and packing have been removed.

Each season, beginning with the first month that three percent of a fruit type is harvested, monthly estimates are computed. Reports from fresh fruit sales organizations and from packers provide data for an average f.o.b. price. Processors report an average spot and cash price for fruit delivered to their plants. From these values, an estimated charge for picking, hauling, and packing is deducted to arrive at an on-tree price. The anticipated box utilization for the month is used to combine the fresh and processing price to obtain an average price for all methods of sales. At the end of the season, monthly price averages are computed and weighted by boxes utilized, to provide the preliminary season average price.

A year later, after most processed products are sold, cooperatives and firms with participating plans report prices of fruit they handled. These prices, combined with the spot and cash prices collected earlier, are weighted together by varieties to determine the final processing price received by growers. From this price, charges for picking, hauling, and packing, as estimated by University of Florida economists, are deducted to arrive at the final on-tree price received by growers.

COUNTY PRODUCTION

Estimates of citrus production by counties were prepared using objective survey data obtained from the citrus crop estimates program. Production for Florida has been distributed to counties based on the biennial citrus tree census, limb count survey data adjusted for droppage to end of season, and size data at maturity.

Tree numbers by county which are used in the estimates were obtained from the latest tree census. Productivity per tree is obtained from several objective fruit surveys including limb count, size, and droppage. Because of the statistical sampling design, counties with higher production in general have a greater number of samples and, therefore, estimates for these counties can be considered more reliable. Thus, for the same reason, estimates for the production areas are more reliable than for the individual counties.

FLORIDA CITRUS: Production of all citrus since 1886-87

Crop year	Type of fruit				Crop year	Type of fruit			
	Oranges	Grape-fruit	Other	Total		Oranges	Grape-fruit	Other	Total
1,000 boxes					1,000 boxes				
1886-87	---	---	---	1,260	1940-41	28,200	24,600	3,180	55,980
1887-88	---	---	---	1,450	1941-42	26,800	19,200	2,650	48,650
1888-89	---	---	---	1,950	1942-43	36,650	27,300	4,925	68,875
1889-90	---	---	---	2,150	1943-44	45,500	31,000	4,490	80,990
1890-91	---	---	---	2,450	1944-45	42,230	22,300	4,670	69,200
1891-92	---	---	---	2,713	1945-46	49,000	32,000	5,200	86,200
1892-93	---	---	---	3,450	1946-47	52,080	26,400	4,790	83,270
1893-94	---	---	---	5,055	1947-48	57,530	29,300	4,440	91,270
1894-95	---	---	---	2,808	1948-49	57,380	30,200	5,520	93,100
1895-96	---	---	---	147	1949-50	57,790	24,200	5,970	87,960
1896-97	---	---	---	218	1950-51	66,200	33,200	5,980	105,380
1897-98	---	---	---	359	1951-52	76,900	33,000	6,060	115,960
1898-99	---	---	---	252	1952-53	70,500	32,500	6,920	109,920
1899-00	---	---	---	274	1953-54	89,100	40,700	7,070	136,870
1900-01	---	---	---	353	1954-55	85,900	34,800	7,998	128,698
1901-02	---	---	---	974	1955-56	88,200	38,300	7,935	134,435
1902-03	---	---	---	1,147	1956-57	90,300	37,400	8,020	135,720
1903-04	---	---	---	1,955	1957-58	81,000	31,100	4,300	116,400
1904-05	---	---	---	2,961	1958-59	83,000	35,200	7,800	126,000
1905-06	---	---	---	3,794	1959-60	87,600	30,500	7,470	125,570
1906-07	---	---	---	3,801	1960-61	82,700	31,600	9,940	124,240
1907-08	---	---	---	3,250	1961-62	108,800	34,800	10,210	153,810
1908-09	---	---	---	4,634	1962-63	72,500	30,000	5,250	107,750
1909-10	5,300	1,100	---	6,400	1963-64	54,900	26,300	8,620	89,820
1910-11	3,600	1,200	---	4,800	1964-65	82,400	31,900	9,350	123,650
1911-12	3,950	1,150	---	5,100	1965-66	95,900	34,900	10,190	140,990
1912-13	6,700	2,000	---	8,700	1966-67	139,500	43,600	11,895	194,995
1913-14	6,200	2,200	---	8,400	1967-68	100,500	32,900	10,880	144,280
1914-15	8,000	2,400	---	10,400	1968-69	129,700	39,900	12,470	182,070
1915-16	6,500	2,400	---	8,900	1969-70	137,700	37,400	13,915	189,015
1916-17	5,700	2,500	---	8,200	1970-71	142,300	42,900	14,450	199,650
1917-18	4,000	2,000	---	6,000	1971-72	137,000	47,000	16,480	200,480
1918-19	6,000	3,500	---	9,500	1972-73	169,700	45,400	15,450	230,550
1919-20	7,550	5,900	478	13,928	1973-74	165,800	48,100	16,350	230,250
1920-21	8,700	5,800	726	15,226	1974-75	173,300	44,600	17,830	235,730
1921-22	7,850	6,700	583	15,133	1975-76	181,200	49,100	19,180	249,480
1922-23	10,150	7,800	785	18,735	1976-77	186,800	51,500	16,200	254,500
1923-24	13,150	8,500	590	22,240	1977-78	167,800	51,400	16,270	235,470
1924-25	10,400	8,900	936	20,236	1978-79	164,000	50,000	16,190	230,190
1925-26	9,500	7,600	730	17,830	1979-80	206,700	54,800	22,050	283,550
1926-27	10,100	8,600	912	19,612	1980-81	172,400	50,300	15,880	238,580
1927-28	8,650	7,500	850	17,000	1981-82	125,800	48,100	15,310	189,210
1928-29	15,000	11,300	1,506	27,806	1982-83	139,600	39,400	14,600	193,600
1929-30	8,950	8,300	858	18,108	1983-84	116,700	40,900	11,945	169,545
1930-31	16,800	15,800	2,408	35,008	1984-85	103,900	44,000	11,005	158,905
1931-32	12,200	10,700	2,009	24,909	1985-86	119,200	46,750	10,065	176,015
1932-33	14,500	11,600	1,910	28,010	1986-87	119,700	49,800	12,030	181,530
1933-34	15,900	10,900	2,012	28,812	1987-88	138,000	53,850	12,250	204,100
1934-35	15,600	15,200	2,015	32,815	1988-89	146,600	54,750	12,500	213,850
1935-36	15,900	11,500	2,112	29,512	1989-90	110,200	35,700	8,285	154,185
1936-37	19,100	18,100	3,045	40,245	1990-91	151,600	45,100	8,960	205,660
1937-38	23,900	14,600	2,370	40,870	1991-92	139,800	42,400	9,615	191,815
1938-39	29,900	23,300	3,495	56,695	1992-93	186,500	55,150	9,790	251,440
1939-40	25,350	15,900	2,745	43,995					

Source: See page 45, Data Sources, item 2.

HISTORY OF FLORIDA'S CITRUS INDUSTRY

The citrus tree is a native of the Orient. From there it was carried ever westward by man, to India, to the Mediterranean, and on across the Atlantic. Citrus was brought to the Americas by Columbus. When he landed on November 22, 1493, he brought citrus seeds that were planted on the island of Haiti. The first seeds planted on the mainland of the Americas were brought by the expedition of Juan de Grijalva when he landed in Central America between July 12 and July 20, 1518. The exact date of the introduction of citrus trees into Florida is not known, but from a statement made by Pedro Medendez, dated April 2, 1579, it appears that citrus fruits were grown in abundance around St. Augustine at that time. Early settlers in Florida some two centuries later found wild citrus trees scattered over the State. One of the oldest cultivated groves planted in Florida (Hume, 1926 p.95) is thought to have been the Don Phillipe grove in Pinellas County, planted sometime between 1809 and 1820.

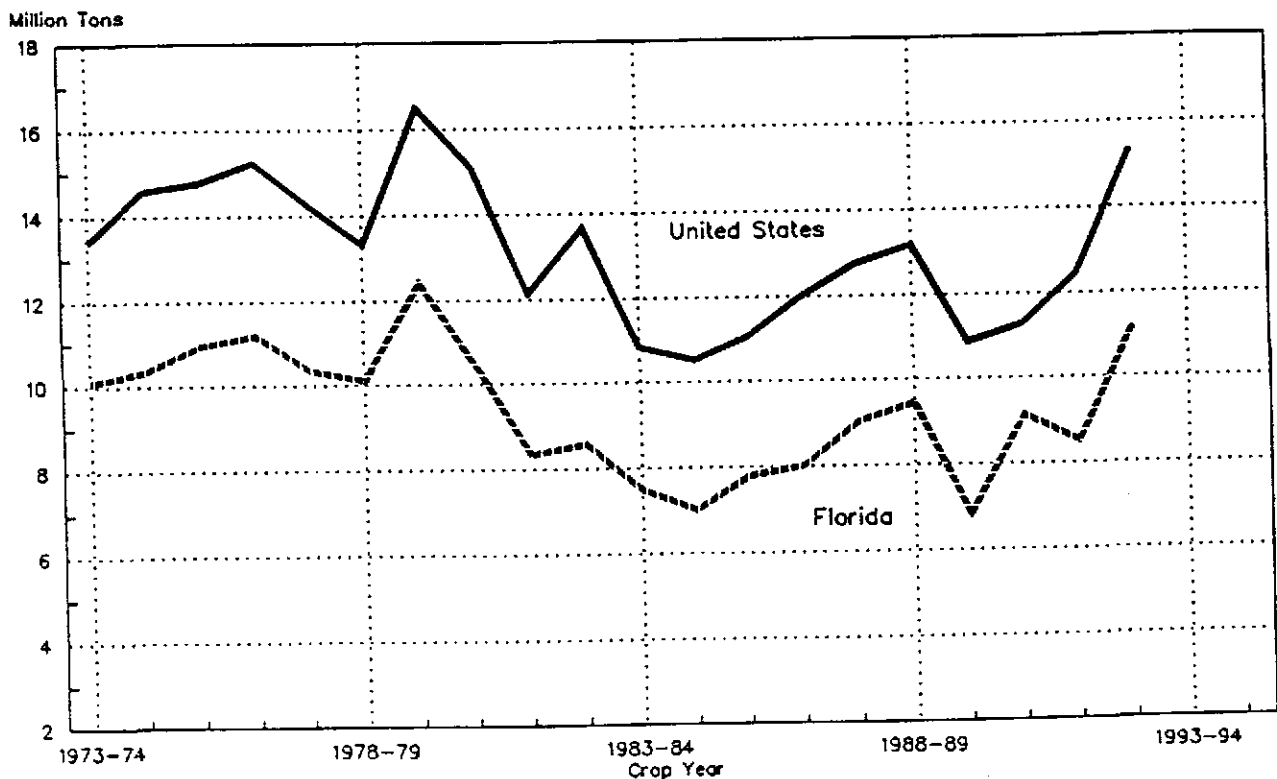
Citrus production in Florida had reached an all time high of more than 5 million boxes when the Great Freeze of 1894-95 almost totally wiped out the citrus industry. It was not until 1909-10 that this level was reached again. In 1992-93, Florida had 73 percent of the Nation's production.

**PRINCIPAL CITRUS FRUITS: Bearing acreage and production, by states,
crop years 1973-74 through 1992-93**

Crop year	Florida		California		Texas		Arizona		United States	
	Bearing acreage	Production 1/	Bearing acreage	Production	Bearing acreage	Production	Bearing acreage	Production	Bearing acreage	Production 1/
	1,000 acres	1,000 tons	1,000 acres	1,000 tons	1,000 acres	1,000 tons	1,000 acres	1,000 tons	1,000 acres	1,000 tons
1973-74	817.3	10,088	269.1	2,285	67.5	709	52.7	330	1,206.6	13,412
1974-75	812.7	10,337	272.7	3,191	64.1	485	55.6	573	1,205.1	14,586
1975-76	796.2	10,943	272.1	2,842	64.1	687	61.2	316	1,193.6	14,788
1976-77	794.9	11,179	267.4	2,816	63.9	789	58.5	458	1,184.7	15,242
1977-78	756.4	10,349	264.6	2,695	68.4	736	52.6	475	1,142.0	14,255
1978-79	751.5	10,101	265.7	2,189	67.6	632	45.8	407	1,130.6	13,329
1979-80	758.4	12,418	265.3	3,208	71.7	487	47.7	371	1,143.1	16,484
1980-81	753.8	10,470	265.6	3,703	66.8	452	43.7	480	1,129.9	15,105
1881-82	747.9	8,331	264.8	2,541	64.8	808	46.8	459	1,124.3	12,139
1982-83	723.0	8,574	260.0	3,945	66.2	689	42.4	474	1,091.6	13,682
1983-84	639.8	7,485	259.3	2,783	67.6	235	41.2	329	1,007.9	10,832
1984-85	575.9	7,014	254.5	3,069	30.5	0	38.4	442	899.3	10,525
1985-86	507.8	7,785	252.8	2,930	21.8	23	36.5	320	818.9	11,058
1986-87	514.5	8,009	250.7	3,377	25.5	115	35.5	493	826.2	11,994
1987-88	519.5	9,020	250.7	3,235	27.1	213	35.6	293	832.9	12,761
1988-89	528.7	9,456	253.9	3,163	28.9	271	36.0	296	847.5	13,186
1989-90	534.6	6,823	249.4	3,649	31.7	131	36.1	257	851.8	10,860
1990-91	555.7	9,127	251.0	1,837	8.0	0	35.2	321	849.9	11,285
1991-92	583.6	8,510	254.5	3,522	11.0	4	37.0	416	886.1	12,452
1992-93	639.3	11,171	253.6	3,738	14.5	97	37.7	340	945.1	15,346

1/ Does not include Florida lemons or K-Early Citrus Fruit. Honey tangerines not included prior to 1981-82 and Sunburst tangerines not included prior to 1989-90.

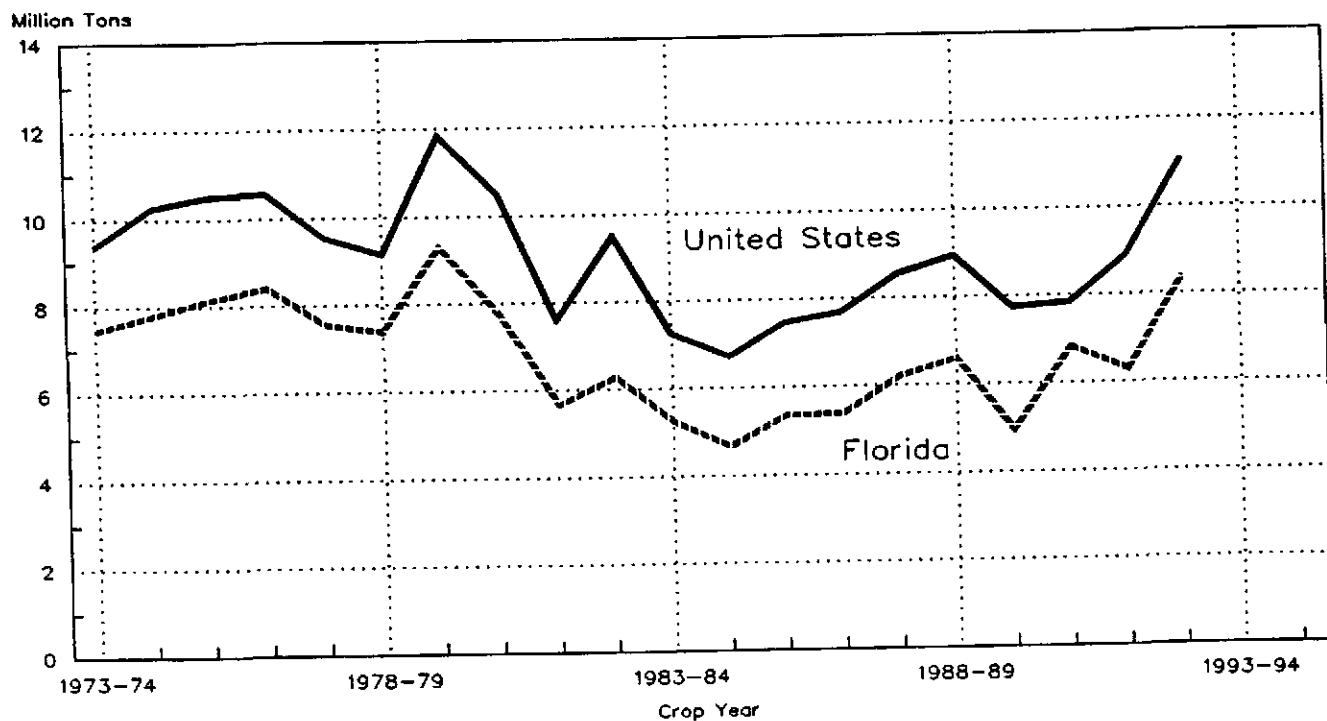
**PRINCIPAL CITRUS FRUITS: Production for the United States and Florida,
1973-74 through 1992-93**



**ORANGES: Bearing acreage and production, by states,
crop years 1973-74 through 1992-93**

Crop year	Florida		California		Texas		Arizona		United States	
	Bearing acreage	Production	Bearing acreage	Production	Bearing acreage	Production	Bearing acreage	Production	Bearing acreage	Production
	1,000 acres	1,000 tons	1,000 acres	1,000 tons	1,000 acres	1,000 tons	1,000 acres	1,000 tons	1,000 acres	1,000 tons
1973-74	614.6	7,461	196.0	1,516	32.5	281	24.4	128	867.5	9,386
1974-75	610.4	7,799	196.9	2,063	30.9	193	24.1	186	862.3	10,241
1975-76	596.4	8,154	197.7	1,980	30.9	259	23.0	100	848.0	10,493
1976-77	594.3	8,406	192.5	1,699	28.2	293	21.0	148	836.0	10,546
1977-78	579.0	7,551	188.6	1,599	28.4	260	16.8	136	812.8	9,546
1978-79	571.5	7,380	187.1	1,399	27.8	272	14.8	109	801.2	9,160
1979-80	576.6	9,302	185.7	2,228	28.0	171	15.7	131	806.0	11,832
1980-81	573.4	7,758	182.7	2,447	25.3	184	13.2	98	794.6	10,487
1881-82	560.2	5,661	180.2	1,572	23.7	252	13.6	115	777.7	7,600
1982-83	536.8	6,282	177.4	2,854	24.0	241	12.6	142	750.8	9,519
1983-84	474.2	5,252	177.1	1,819	24.3	107	12.6	65	688.2	7,243
1984-85	420.1	4,676	175.3	1,966	11.4	0	10.9	77	617.7	6,719
1985-86	367.6	5,364	174.6	2,022	8.3	14	11.0	76	561.5	7,476
1986-87	375.4	5,387	172.9	2,172	10.3	37	10.9	101	569.5	7,697
1987-88	380.2	6,210	172.6	2,212	11.1	61	10.6	68	574.5	8,551
1988-89	388.7	6,597	177.6	2,209	12.0	79	10.4	64	588.7	8,949
1989-90	399.5	4,959	175.1	2,676	13.0	51	10.2	59	597.8	7,745
1990-91	420.9	6,822	178.4	960	3.5	0	9.9	66	612.7	7,848
1991-92	444.4	6,291	181.8	2,528	3.5	1	10.4	89	640.1	8,909
1992-93	489.2	8,392	181.7	2,580	4.4	21	10.6	69	685.9	11,062

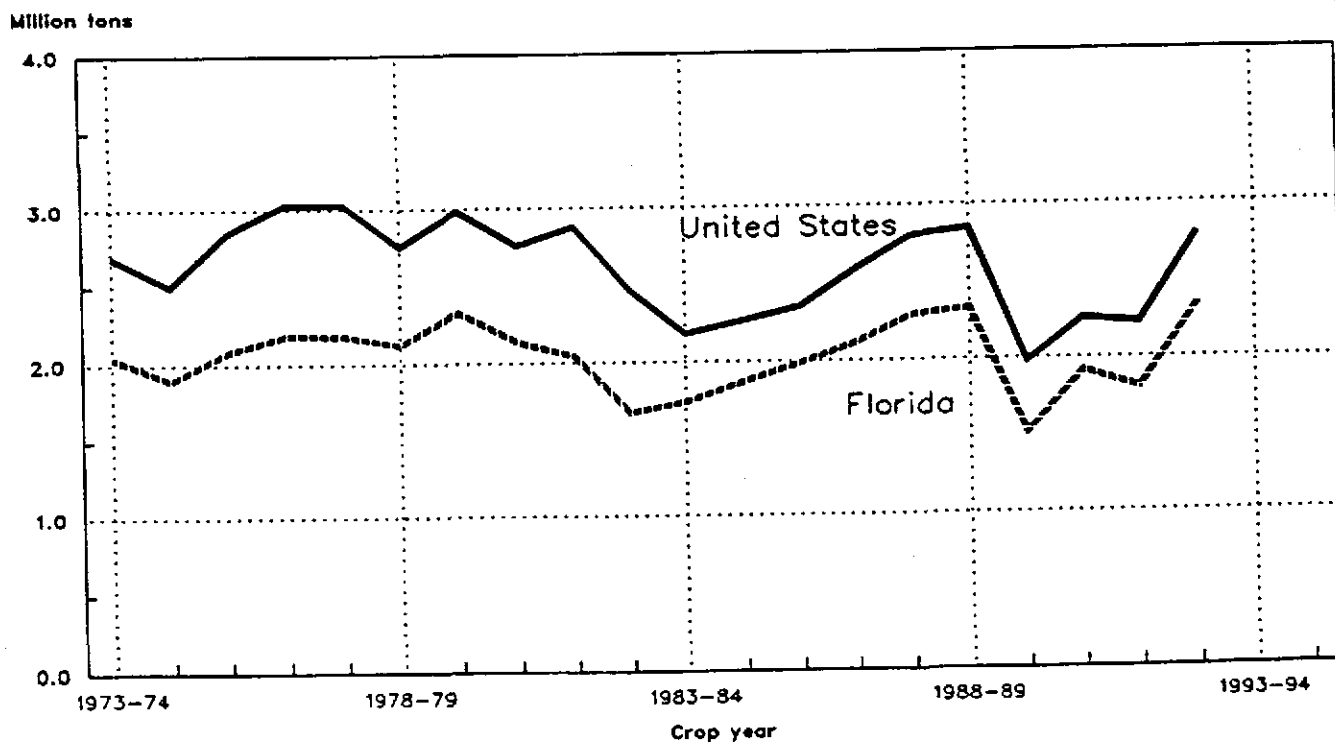
**ORANGES: Production for the United States and Florida,
1973-74 through 1992-93**



**GRAPEFRUIT: Bearing acreage and production, by states,
crop years 1973-74 through 1992-93**

Crop year	Florida		Texas		California		Arizona		United States	
	Bearing acreage	Production	Bearing acreage	Production	Bearing acreage	Production	Bearing acreage	Production	Bearing acreage	Production
	1,000 acres	1,000 tons	1,000 acres	1,000 tons	1,000 acres	1,000 tons	1,000 acres	1,000 tons	1,000 acres	1,000 tons
1973-74	115.8	2,044	35.0	428	14.3	154	8.2	66	173.3	2,692
1974-75	115.4	1,897	33.1	292	15.8	226	9.3	89	173.6	2,504
1975-76	117.9	2,088	33.1	428	16.4	234	9.6	100	177.0	2,850
1976-77	119.3	2,190	35.1	496	16.6	250	10.2	96	181.2	3,032
1977-78	120.3	2,184	40.1	476	17.4	274	10.8	96	188.6	3,030
1978-79	124.6	2,125	39.8	360	19.5	200	8.9	72	192.8	2,757
1979-80	126.4	2,329	43.8	316	21.3	245	8.4	96	199.9	2,986
1980-81	125.6	2,138	41.5	268	21.8	263	8.1	90	197.0	2,759
1981-82	127.8	2,044	41.1	556	22.0	201	8.2	77	199.1	2,878
1982-83	128.6	1,674	42.2	448	21.7	238	6.8	105	199.3	2,465
1983-84	119.6	1,738	43.3	128	21.9	238	6.8	80	191.6	2,184
1984-85	115.5	1,870	19.1	0	21.1	289	7.1	107	162.8	2,266
1985-86	105.1	1,987	13.5	9	20.9	266	5.7	90	145.2	2,352
1986-87	106.0	2,116	15.2	77	20.8	305	5.9	88	147.9	2,586
1987-88	106.0	2,289	16.0	152	20.7	298	6.0	62	148.7	2,801
1988-89	106.9	2,327	16.9	192	19.9	263	6.5	62	150.2	2,844
1989-90	103.0	1,517	18.7	80	19.2	310	6.4	71	147.3	1,978
1990-91	104.2	1,916	4.5	0	18.3	263	6.2	77	133.2	2,256
1991-92	104.7	1,802	7.5	3	18.5	330	5.9	89	136.6	2,224
1992-93	111.9	2,344	10.1	75	17.7	313	5.9	69	145.6	2,801

**GRAPEFRUIT: Production for the United States and Florida,
1973-74 through 1992-93**



FLORIDA CITRUS: Trees, acreage, yield, production, utilization, season average price, and value for crop years 1973-74 through 1992-93 1/

Crop year	Bearing trees	Bearing acreage	Yield per acre	Utilization of production			On-tree	
				Total	Fresh	Processed	Price per box	Value of production
	1,000 trees	1,000 acres	Boxes	1,000 boxes			Dollars	1,000 dollars
ALL ROUND ORANGES								
1973-74	NA	614.6	270	165,800	11,090	154,710	1.47	244,691
1974-75	NA	610.4	284	173,300	13,393	159,907	1.62	280,350
1975-76	48,374	596.4	304	181,200	11,730	169,470	1.77	321,449
1976-77	48,278	594.3	314	186,800	8,878	177,922	2.17	405,982
1977-78	42,455	579.0	290	167,800	9,966	157,834	4.14	693,677
1978-79	46,955	571.5	287	164,000	11,701	152,299	4.66	764,961
1979-80	47,366	576.6	358	206,700	10,990	195,710	3.72	768,877
1980-81	47,079	573.4	301	172,400	8,276	164,124	4.04	697,231
1981-82	46,079	560.2	225	125,800	7,620	118,180	4.28	538,686
1982-83	44,228	536.8	260	139,600	10,320	129,280	5.15	718,420
1983-84	39,778	474.3	246	116,700	7,640	109,060	5.75	670,618
1984-85	35,415	420.1	247	103,900	6,652	97,248	7.10	737,923
1985-86	32,708	367.6	324	119,200	8,960	110,240	3.94	469,959
1986-87	33,752	375.4	319	119,700	8,870	110,830	5.22	624,771
1987-88	35,537	380.2	363	138,000	9,520	128,480	7.58	1,046,700
1988-89	36,750	388.7	377	146,600	8,488	138,112	7.41	1,086,319
1989-90	40,666	399.5	276	110,200	5,922	104,278	6.21	684,226
1990-91	44,077	420.9	360	151,600	12,451	139,149	5.89	892,675
1991-92	49,577	444.4	315	139,800	11,552	128,248	5.93	828,749
1992-93	56,601	489.2	381	186,500	10,693	175,807	2.67	497,369
EARLY AND MIDSEASON ORANGES (Including Navels)								
1973-74	NA	316.3	291	92,100	6,110	85,990	1.38	127,438
1974-75	NA	314.8	307	96,600	7,402	89,198	1.46	140,792
1975-76	25,265	308.4	320	98,800	6,485	92,315	1.69	166,911
1976-77	25,145	306.9	375	115,000	6,131	108,869	1.89	216,967
1977-78	24,682	299.0	295	88,300	5,750	82,550	3.90	344,268
1978-79	24,502	295.5	308	91,000	6,325	84,675	4.44	403,767
1979-80	24,732	298.9	394	117,900	6,476	111,424	3.59	423,324
1980-81	24,569	297.2	355	105,600	5,788	99,812	3.67	387,714
1981-82	24,016	289.6	256	74,000	4,929	69,071	4.27	316,316
1982-83	23,065	277.8	253	70,200	6,067	64,133	4.88	342,914
1983-84	20,126	237.3	294	69,700	4,939	64,761	5.09	354,800
1984-85	17,470	198.3	277	55,000	4,418	50,582	7.30	401,369
1985-86	16,487	182.3	352	64,200	5,121	59,079	3.92	251,366
1986-87	17,320	189.1	348	65,800	5,267	60,533	4.56	300,290
1987-88	18,822	198.1	396	78,500	5,870	72,630	6.72	527,169
1988-89	19,744	205.4	415	85,300	5,434	79,866	6.69	571,082
1989-90	22,034	215.3	316	68,100	4,851	63,249	6.01	409,376
1990-91	23,511	223.3	392	87,500	5,966	81,534	5.38	471,049
1991-92	27,051	243.3	343	83,400	7,780	75,620	5.44	453,501
1992-93	30,379	264.1	433	114,300	6,958	107,342	2.29	262,096

1/ 1992-93 preliminary.

FLORIDA CITRUS: Trees, acreage, yield, production, utilization, season average price, and value for crop years 1973-74 through 1992-93 1/

Crop year	Bearing trees	Bearing acreage	Yield per acre	Utilization of production			On-tree	
				Total	Fresh	Processed	Price per box	Value of production
	1,000 trees	1,000 acres	Boxes	1,000 boxes			Dollars	1,000 dollars
LATE (VALENCIA) ORANGES								
1973-74	NA	298.3	247	73,700	4,980	68,720	1.59	117,253
1974-75	NA	295.6	259	76,700	5,991	70,709	1.82	139,558
1975-76	23,109	288.0	286	82,400	5,245	77,155	1.88	154,538
1976-77	23,133	287.4	250	71,800	2,747	69,053	2.63	189,015
1977-78	22,773	280.0	284	79,500	4,216	75,284	4.40	349,409
1978-79	22,453	276.0	264	73,000	5,376	67,624	4.95	361,194
1979-80	22,634	277.7	320	88,800	4,514	84,286	3.89	345,553
1980-81	22,510	276.2	242	66,800	2,488	64,312	4.63	309,517
1981-82	22,063	270.6	191	51,800	2,691	49,109	4.29	222,370
1982-83	21,163	259.0	268	69,400	4,253	65,147	5.41	375,506
1983-84	19,652	237.0	198	47,000	2,701	44,299	6.72	315,818
1984-85	17,945	221.8	220	48,900	2,234	46,666	6.88	336,554
1985-86	16,221	185.3	297	55,000	3,839	51,161	3.97	218,593
1986-87	16,432	186.3	289	53,900	3,603	50,297	6.02	324,481
1987-88	16,715	182.1	327	59,500	3,650	55,850	8.73	519,531
1988-89	17,006	183.3	334	61,300	3,054	58,246	8.41	515,237
1989-90	18,632	184.2	229	42,100	1,071	41,029	6.53	274,850
1990-91	20,566	197.6	324	64,100	6,485	57,615	6.58	421,626
1991-92	22,526	201.1	280	56,400	3,772	52,628	6.65	375,248
1992-93	26,222	225.1	321	72,200	3,735	68,465	3.26	235,273
TEMPLES								
1973-74	NA	21.9	242	5,300	1,925	3,375	1.64	8,669
1974-75	NA	21.9	242	5,300	1,908	3,392	1.68	8,893
1975-76	1,762	20.5	268	5,500	2,329	3,171	1.79	9,870
1976-77	1,686	20.3	187	3,800	1,184	2,616	2.16	8,189
1977-78	1,628	18.9	259	4,900	2,049	2,851	3.92	19,226
1978-79	1,576	18.3	257	4,700	2,135	2,565	4.89	22,968
1979-80	1,566	18.2	330	6,000	2,784	3,216	2.89	17,356
1980-81	1,521	17.7	203	3,600	1,107	2,493	4.21	15,170
1981-82	1,444	16.8	190	3,200	838	2,362	4.01	12,824
1982-83	1,400	15.8	297	4,700	1,563	3,137	3.99	18,735
1983-84	1,175	13.5	215	2,900	762	2,138	5.34	15,476
1984-85	1,068	12.2	266	3,250	626	2,624	5.59	18,162
1985-86	910	10.0	295	2,950	913	2,037	3.01	8,870
1986-87	856	9.4	362	3,400	1,053	2,347	3.60	12,236
1987-88	862	9.3	382	3,550	1,292	2,258	5.69	20,196
1988-89	859	9.3	403	3,750	869	2,881	5.46	20,474
1989-90	776	8.0	175	1,400	139	1,261	5.64	7,889
1990-91	744	7.7	325	2,500	794	1,706	6.31	15,786
1991-92	720	7.1	331	2,350	848	1,502	6.51	15,289
1992-93	744	7.3	342	2,500	947	1,553	2.00	4,990

1/ 1992-93 preliminary.

FLORIDA CITRUS: Trees, acreage, yield, production, utilization, season average price, and value for crop years 1973-74 through 1992-93 1/

Crop year	Bearing trees	Bearing acreage	Yield per acre	Utilization of production			On-tree	
				Total	Fresh	Processed	Price per box	Value of production
	1,000 trees	1,000 acres	Boxes	1,000 boxes			Dollars	1,000 dollars
ALL GRAPEFRUIT								
1973-74	NA	115.8	415	48,100	18,731	29,369	1.66	79,879
1974-75	NA	115.4	386	44,600	18,797	25,806	1.72	76,367
1975-76	8,599	117.9	416	49,100	20,369	28,731	1.47	72,155
1976-77	8,845	119.3	432	51,500	16,393	35,107	1.58	81,116
1977-78	8,970	120.3	427	51,400	18,038	33,362	1.64	84,438
1978-79	9,358	124.6	401	50,000	19,790	30,210	2.41	120,128
1979-80	9,586	126.4	434	54,800	19,501	35,299	3.31	181,208
1980-81	9,658	125.6	400	50,300	17,167	33,133	3.60	181,155
1981-82	9,754	127.8	376	48,100	16,719	31,381	2.09	100,597
1982-83	9,827	128.6	306	39,400	18,313	21,087	1.96	77,221
1983-84	9,193	119.6	342	40,900	16,661	24,239	2.72	111,158
1984-85	8,910	115.5	381	44,000	14,988	29,012	3.67	161,356
1985-86	8,368	105.1	445	46,750	19,620	27,130	4.09	191,068
1986-87	8,491	106.0	470	49,800	20,938	28,862	4.98	248,120
1987-88	8,655	106.0	508	53,850	23,110	30,740	5.57	299,887
1988-89	8,807	106.9	512	54,750	23,902	30,848	4.45	243,874
1989-90	8,748	103.0	347	35,700	13,344	22,356	5.65	201,756
1990-91	9,026	104.2	433	45,100	23,923	21,177	5.66	255,328
1991-92	9,557	104.7	405	42,400	22,841	19,559	6.62	280,629
1992-93	10,546	111.9	493	55,150	23,156	31,994	2.57	141,923
SEEDY GRAPEFRUIT								
1973-74	NA	23.6	424	10,000	138	9,862	1.31	13,117
1974-75	NA	23.3	309	7,200	147	7,053	0.87	6,270
1975-76	1,495	22.6	345	7,800	109	7,691	0.85	6,668
1976-77	1,482	22.5	404	9,100	64	9,036	1.20	10,920
1977-78	1,401	21.0	400	8,400	85	8,315	1.45	12,180
1978-79	1,381	21.3	343	7,300	71	7,229	1.84	13,432
1979-80	1,334	20.0	395	7,900	106	7,794	3.04	24,016
1980-81	1,312	19.6	372	7,300	69	7,231	2.92	21,316
1981-82	1,292	19.3	311	6,000	2/	6,000	1.13	6,780
1982-83	1,261	19.0	253	4,800	2/	4,800	0.70	3,360
1983-84	1,013	15.3	295	4,500	2/	4,500	2.01	9,045
1984-85	928	12.7	228	2,900	2/	2,900	2.58	7,482
1985-86	694	10.3	306	3,150	2/	3,150	3.27	10,301
1986-87	641	9.5	305	2,900	2/	2,900	4.27	12,383
1987-88	622	8.9	309	2,750	2/	2,750	4.99	13,723
1988-89	612	8.7	385	3,350	2/	3,350	3.68	12,328
1989-90	529	7.1	197	1,400	2/	1,400	3.84	5,376
1990-91	457	6.1	262	1,600	2/	1,600	3.93	6,288
1991-92	396	4.9	245	1,200	2/	1,200	4.57	5,484
1992-93	403	5.0	350	1,750	2/	1,750	1.53	2,678

1/ 1992-93 preliminary. 2/ Fresh sales negligible.

FLORIDA CITRUS: Trees, acreage, yield, production, utilization, season average price, and value for crop years 1973-74 through 1992-93 1/

Crop year	Bearing trees	Bearing acreage	Yield per acre	Utilization of production			On-tree	
				Total	Fresh	Processed	Price per box	Value of production
	1,000 trees	1,000 acres	Boxes	1,000 boxes			Dollars	1,000 dollars
WHITE SEEDLESS GRAPEFRUIT								
1973-74	NA	61.3	423	25,900	10,748	15,152	1.58	40,919
1974-75	NA	61.1	424	25,900	11,008	14,892	1.55	40,282
1975-76	4,778	63.3	447	28,300	11,315	16,985	1.29	36,557
1976-77	4,902	63.6	470	29,900	9,805	20,095	1.49	44,690
1977-78	4,921	64.2	447	28,700	9,026	19,674	1.47	42,323
1978-79	5,096	66.0	445	29,400	10,179	19,221	2.21	65,021
1979-80	5,177	66.9	465	31,100	8,900	22,200	3.12	97,086
1980-81	5,165	66.6	426	28,400	8,195	20,205	3.46	98,285
1981-82	5,083	65.8	415	27,300	8,329	18,971	1.92	52,370
1982-83	5,045	65.4	333	21,800	9,045	12,755	1.51	32,941
1983-84	4,664	60.5	380	23,000	7,642	15,358	2.08	47,885
1984-85	4,491	58.2	426	24,800	5,350	19,450	3.02	74,956
1985-86	4,206	53.4	479	25,600	6,735	18,865	3.56	91,107
1986-87	4,173	53.0	508	26,900	7,086	19,814	4.45	119,693
1987-88	4,126	51.6	566	29,200	8,020	21,180	5.35	156,360
1988-89	4,092	51.1	542	27,700	8,033	19,667	4.33	119,980
1989-90	3,942	48.2	373	18,000	4,054	13,946	5.21	93,737
1990-91	3,888	47.4	458	21,700	8,191	13,509	4.59	99,622
1991-92	3,844	44.9	425	19,100	6,754	12,346	6.46	123,337
1992-93	4,191	47.4	542	25,700	6,087	19,613	2.06	52,855
COLORED SEEDLESS GRAPEFRUIT								
1973-74	NA	30.9	395	12,200	7,845	4,355	2.12	25,843
1974-75	NA	31.0	371	11,500	7,642	3,858	2.59	29,815
1975-76	2,326	32.0	406	13,000	8,945	4,055	2.23	28,930
1976-77	2,461	33.2	377	12,500	6,524	5,976	2.04	25,506
1977-78	2,648	35.1	407	14,300	8,927	5,373	2.09	29,935
1978-79	2,880	37.3	357	13,300	9,540	3,760	3.13	41,675
1979-80	3,075	39.5	400	15,800	10,495	5,305	3.80	60,106
1980-81	3,181	39.4	371	14,600	8,903	5,697	4.22	61,554
1981-82	3,379	42.7	347	14,800	8,390	6,410	2.80	41,447
1982-83	3,521	44.2	290	12,800	9,268	3,532	3.20	40,920
1983-84	3,516	43.8	306	13,400	9,019	4,381	4.05	54,228
1984-85	3,491	44.6	365	16,300	9,638	6,662	4.84	78,918
1985-86	3,468	41.4	435	18,000	12,885	5,115	4.98	89,660
1986-87	3,677	43.5	460	20,000	13,852	6,148	5.80	116,044
1987-88	3,907	45.5	481	21,900	15,090	6,810	5.93	129,804
1988-89	4,103	47.1	503	23,700	15,869	7,831	4.71	111,566
1989-90	4,277	47.7	342	16,300	9,290	7,010	6.30	102,643
1990-91	4,681	50.7	430	21,800	15,732	6,068	6.85	149,418
1991-92	5,317	54.9	403	22,100	16,087	6,013	6.87	151,808
1992-93	5,952	59.5	466	27,700	17,069	10,631	3.12	86,390

1/ 1992-93 preliminary.

FLORIDA CITRUS: Trees, acreage, yield, production, utilization, season average price, and value for crop years 1973-74 through 1992-93 1/

Crop year	Bearing trees	Bearing acreage	Yield per acre	Utilization of production			On-tree	
				Total	Fresh	Processed	Price per box	Value of production
	1,000 trees	1,000 acres	Boxes	1,000 boxes			Dollars	1,000 dollars
TANGELOS								
1973-74	NA	18.8	197	3,700	1,596	2,104	1.25	4,631
1974-75	NA	18.9	249	4,700	2,363	2,337	1.45	6,833
1975-76	1,757	18.6	296	5,500	2,245	3,255	1.42	7,806
1976-77	1,744	18.4	261	4,800	2,295	2,505	1.42	6,814
1977-78	1,694	17.9	274	4,900	1,987	2,913	3.29	16,144
1978-79	1,610	17.1	246	4,200	1,721	2,479	3.90	16,360
1979-80	1,622	17.3	370	6,400	1,807	4,593	2.87	18,351
1980-81	1,568	16.8	292	4,900	2,056	2,844	3.92	19,226
1981-82	1,486	16.1	317	5,100	1,780	3,320	3.58	18,264
1982-83	1,441	15.6	244	3,800	1,878	1,922	4.37	16,596
1983-84	1,143	12.3	293	3,600	1,596	2,004	4.28	15,395
1984-85	938	10.1	356	3,600	1,468	2,132	7.08	25,501
1985-86	894	9.5	311	2,950	1,338	1,612	4.06	11,980
1986-87	889	9.5	421	4,000	1,310	2,690	3.72	14,891
1987-88	887	9.4	447	4,200	1,395	2,805	5.58	23,435
1988-89	904	9.5	400	3,800	1,348	2,452	6.31	23,994
1989-90	873	8.9	331	2,950	1,118	1,832	5.10	15,046
1990-91	815	8.0	331	2,650	1,186	1,464	6.11	16,203
1991-92	1,050	9.8	265	2,600	1,307	1,293	7.16	18,618
1992-93	1,161	10.5	290	3,050	1,316	1,734	2.85	8,705
ALL TANGERINES 2/								
1973-74	NA	19.1	147	2,800	2,055	745	2.82	7,885
1974-75	NA	19.4	160	3,100	2,211	889	3.05	9,463
1975-76	1,595	18.0	189	3,400	2,362	1,038	3.02	10,251
1976-77	1,559	17.9	184	3,300	2,317	983	3.29	10,855
1977-78	1,488	16.5	194	3,200	1,901	1,299	4.79	15,339
1978-79	1,434	15.9	220	3,500	1,891	1,609	4.99	17,465
1979-80	1,381	15.2	257	3,900	2,339	1,561	4.25	16,594
1980-81	1,331	15.0	200	3,000	1,905	1,095	5.45	16,361
1981-82	1,971	20.6	199	4,100	1,917	2,183	5.91	24,236
1982-83	1,815	18.9	180	3,400	2,170	1,230	7.81	26,556
1983-84	1,287	13.2	225	2,975	1,858	1,117	7.08	21,075
1984-85	1,101	11.3	163	1,840	945	895	13.66	25,127
1985-86	904	8.8	222	1,950	1,189	761	11.55	22,515
1986-87	768	7.5	312	2,340	1,462	878	10.92	25,563
1987-88	796	7.6	322	2,450	1,614	836	12.99	31,831
1988-89	794	7.7	377	2,900	1,639	1,261	12.64	36,652
1989-90	946	8.5	200	1,700	999	701	15.28	25,981
1990-91	1,021	8.7	224	1,950	1,227	723	17.10	33,349
1991-92	1,403	11.3	230	2,600	1,965	635	18.00	46,797
1992-93	1,781	13.7	204	2,800	2,065	735	13.61	38,106

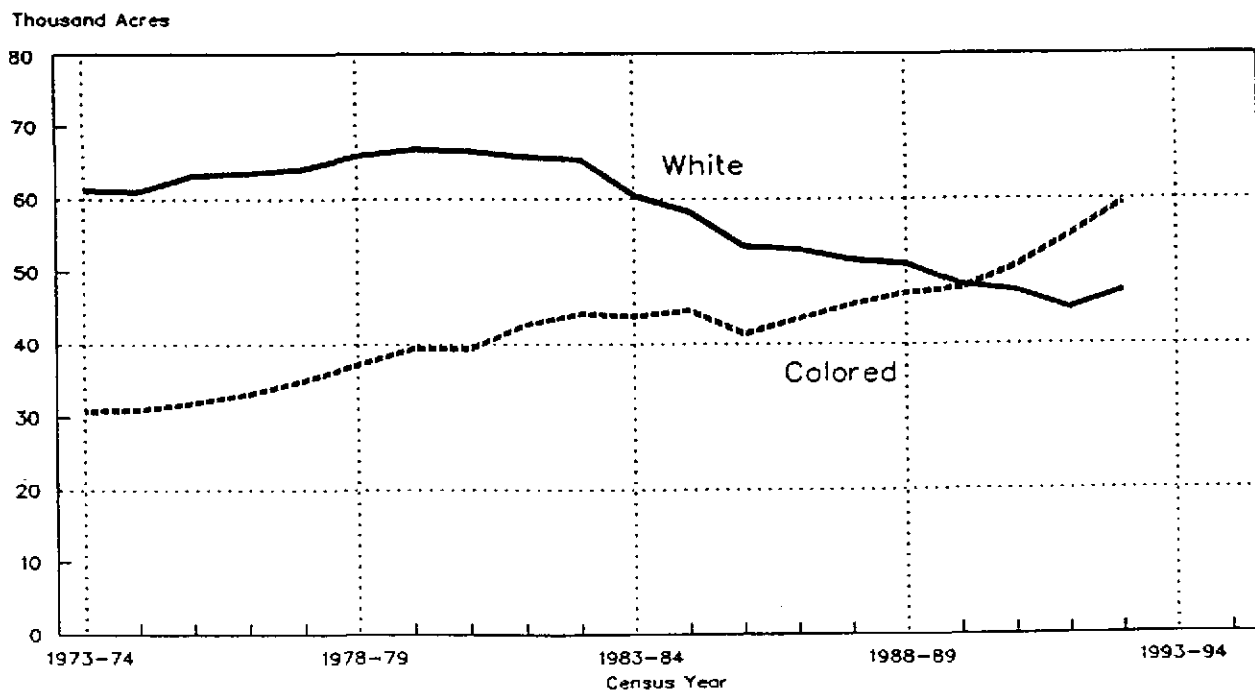
1/ 1992-93 preliminary. 2/ Honey tangerines not included prior to 1981-82 and Sunburst tangerines not included prior to 1989-90.

FLORIDA CITRUS: Acreage, yield, production, utilization, season average price, and value for crop years 1973-74 through 1992-93 1/

Crop year	Bearing trees 1,000 trees	Bearing acreage 1,000 acres	Yield per acre Boxes	Utilization of production			On-tree	
				Total 1,000 boxes	Fresh 1,000 boxes	Processed 1,000 boxes	Price per box Dollars	Value of production 1,000 dollars
LIMES								
1973-74	NA	4.4	239	1,050	479	571	5.10	5,351
1974-75	NA	4.4	250	1,100	493	607	5.35	5,889
1975-76	711	4.4	245	1,080	586	494	6.70	7,235
1976-77	728	4.5	222	1,000	514	486	8.60	8,596
1977-78	617	3.8	121	460	340	120	15.72	7,229
1978-79	682	4.1	176	720	481	239	12.44	8,948
1979-80	777	4.7	234	1,100	622	478	8.18	8,996
1980-81	867	5.3	226	1,200	697	503	6.58	7,891
1981-82	1,021	6.4	203	1,300	625	675	7.88	10,238
1982-83	1,143	7.3	233	1,700	975	725	8.39	14,262
1983-84	1,100	7.0	206	1,440	825	615	7.46	10,736
1984-85	1,070	6.7	245	1,640	1,025	615	7.27	11,927
1985-86	1,068	6.8	254	1,725	880	845	7.94	13,692
1986-87	1,059	6.7	216	1,450	850	600	8.57	12,424
1987-88	1,100	7.0	186	1,300	860	440	12.69	16,493
1988-89	1,036	6.6	189	1,250	950	300	11.29	14,112
1989-90	1,040	6.7	246	1,650	1,010	640	8.26	13,634
1990-91	967	6.2	234	1,450	930	520	13.99	20,289
1991-92	983	6.3	254	1,600	1,070	530	9.12	14,589
1992-93 2/	983	6.3	159	1,000	730	270	1.02	1,017

1/ 1992-93 preliminary. 2/ Hurricane Andrew August 24, 1992.

FLORIDA SEEDLESS GRAPEFRUIT: Bearing acreage by type, 1973-74 through 1992-93



CITRUS FRUITS: Utilization, season average on-tree price, and value by types, by states, crop years 1987-88 through 1992-93 1/

Crop year	Utilization of production			Price per box			Value of production		
	Fresh	Proc	Total	Fresh	Proc	Total	Fresh	Proc	Total
	1,000 boxes			Dollars per box			1,000 dollars		
UNITED STATES ORANGES									
1987-88	53,521	146,729	200,250	8.41	6.78	7.18	450,588	974,259	1,424,847
1988-89	51,859	157,191	209,050	8.21	6.76	7.08	426,433	1,044,149	1,470,582
1989-90	54,844	129,571	184,415	8.49	5.25	6.13	463,303	665,323	1,128,626
1990-91	30,069	148,881	178,950	14.84	5.29	6.78	462,185	777,794	1,239,979
1991-92	54,738	154,872	209,610	7.97	4.72	5.50	435,223	706,753	1,141,976
1992-93	62,837	194,823	257,660	6.32	2.20	3.11	402,358	415,321	817,679
FLORIDA ORANGES									
1987-88	9,520	128,480	138,000	7.96	7.56	7.58	75,749	970,951	1,046,700
1988-89	8,488	138,112	146,600	7.61	7.40	7.41	64,628	1,021,691	1,086,319
1989-90	5,922	104,278	110,200	10.31	5.98	6.21	61,053	623,173	684,226
1990-91	12,451	139,149	151,600	8.46	5.66	5.89	105,289	787,386	892,675
1991-92	11,552	128,248	139,800	8.52	5.69	5.93	98,404	730,345	828,749
1992-93	10,693	175,807	186,500	3.80	2.60	2.67	40,648	456,720	497,368
CALIFORNIA ORANGES									
1987-88	41,300	17,700	59,000	8.55	0.15	6.03	352,984	2,646	355,630
1988-89	40,600	18,300	58,900	8.37	1.15	6.12	339,703	20,961	360,664
1989-90	47,100	24,300	71,400	8.22	1.63	5.98	387,375	39,525	426,900
1990-91	16,200	9,400	25,600	20.29	-0.98	12.48	328,740	-9,178	319,562
1991-92	41,350	26,050	67,400	7.85	-0.89	4.47	324,637	-23,257	301,380
1992-93	50,200	18,600	68,800	7.02	-2.19	4.53	352,311	-40,713	311,598
TEXAS ORANGES									
1987-88	1,276	154	1,430	8.05	3.27	7.53	10,272	503	10,775
1988-89	1,556	294	1,850	6.92	3.67	6.40	10,766	1,080	11,846
1989-90	663	542	1,205	7.92	3.00	5.71	5,251	1,627	6,878
1990-91	--	--	--	--	--	--	--	--	--
1991-92	30	--	30	12.77	--	12.77	383	--	383
1992-93	448	62	510	6.94	3.00	6.46	3,110	186	3,296
ARIZONA ORANGES									
1987-88	1,425	395	1,820	8.13	0.40	6.45	11,583	159	11,742
1988-89	1,215	485	1,700	9.33	0.86	6.91	11,336	417	11,753
1989-90	1,159	451	1,610	8.30	2.21	6.60	9,624	998	10,622
1990-91	1,418	332	1,750	19.86	-1.25	15.85	28,156	-414	27,742
1991-92	1,806	574	2,380	6.53	-0.58	4.82	11,799	-335	11,464
1992-93	1,496	354	1,850	4.20	-2.46	2.93	6,289	-872	5,417

1/ 1992-93 preliminary.

**CITRUS FRUITS: Utilization, season average on-tree price, and value by
types, by states, crop years 1988-89 through 1992-93 1/**

Crop year	Utilization of production			Price per box			Value of production		
	Fresh	Proc	Total	Fresh	Proc	Total	Fresh	Proc	Total
	1,000 boxes			Dollars per box			1,000 dollars		
FLORIDA EARLY AND MIDSEASON ORANGES (INCLUDING NAVELS)									
1988-89	5,434	79,866	85,300	7.65	6.63	6.69	41,570	529,512	571,082
1989-90	4,851	63,249	68,100	9.55	5.74	6.01	46,327	363,049	409,376
1990-91	5,966	81,534	87,500	8.30	5.17	5.38	49,518	421,531	471,049
1991-92	7,780	75,620	83,400	9.40	5.03	5.44	73,132	380,369	453,501
1992-93	6,958	107,342	114,300	4.50	2.15	2.29	31,311	230,785	262,096
FLORIDA NAVELS									
1988-89	2,312	788	3,100	10.05	4.43	8.62	23,236	3,491	26,727
1989-90	2,135	765	2,900	11.85	3.38	9.62	25,300	2,586	27,886
1990-91	2,787	913	3,700	10.70	2.85	8.76	29,821	2,602	32,423
1991-92	2,992	708	3,700	12.40	3.35	10.67	37,101	2,372	39,473
1992-93	3,537	1,263	4,800	6.00	0.92	4.66	21,222	1,162	22,384
FLORIDA LATE (VALENCIA) ORANGES									
1988-89	3,054	58,246	61,300	7.55	8.45	8.41	23,058	492,179	515,237
1989-90	1,071	41,029	42,100	13.75	6.34	6.53	14,726	260,124	274,850
1990-91	6,485	57,615	64,100	8.60	6.35	6.58	55,771	365,855	421,626
1991-92	3,772	52,628	56,400	6.70	6.65	6.65	25,272	349,976	375,248
1992-93	3,735	68,465	72,200	2.50	3.30	3.26	9,337	225,935	235,272
CALIFORNIA NAVELS AND MISCELLANEOUS ORANGES									
1988-89	25,900	8,100	34,000	7.69	0.17	5.90	199,171	1,377	200,548
1989-90	32,300	12,000	44,300	7.97	1.91	6.33	257,431	22,920	280,351
1990-91	9,200	6,600	15,800	14.90	-0.89	8.30	137,080	-5,874	131,206
1991-92	26,500	8,600	35,100	9.23	-0.31	6.89	244,595	-2,666	241,929
1992-93	32,700	11,100	43,800	6.68	-2.33	4.40	218,436	-25,863	192,573
CALIFORNIA VALENCIA ORANGES									
1988-89	14,700	10,200	24,900	9.56	1.92	6.43	140,532	19,584	160,116
1989-90	14,800	12,300	27,100	8.78	1.35	5.41	129,944	16,605	146,549
1990-91	7,000	2,800	9,800	27.38	-1.18	19.22	191,660	-3,304	188,356
1991-92	14,850	17,450	32,300	5.39	-1.18	1.84	80,042	-20,591	59,451
1992-93	17,500	7,500	25,000	7.65	-1.98	4.76	133,875	-14,850	119,025
FLORIDA TEMPLES									
1988-89	869	2,881	3,750	7.15	4.95	5.46	6,213	14,261	20,474
1989-90	139	1,261	1,400	17.75	4.30	5.64	2,467	5,422	7,889
1990-91	794	1,706	2,500	10.60	4.32	6.31	8,416	7,370	15,786
1991-92	848	1,502	2,350	8.50	5.38	6.51	7,208	8,081	15,289
1992-93	947	1,553	2,500	4.40	0.53	2.00	4,167	823	4,990

1/ 1992-93 preliminary.

CITRUS FRUITS: Utilization, season average on-tree price, and value by types, by states, crop years 1987-88 through 1992-93 1/

Crop year	Utilization of production			Price per box			Value of production		
	Fresh	Proc	Total	Fresh	Proc	Total	Fresh	Proc	Total
	1,000 boxes			Dollars per box			1,000 dollars		
UNITED STATES GRAPEFRUIT									
1987-88	33,195	35,505	68,700	6.84	4.16	5.43	226,968	143,484	370,452
1988-89	34,627	34,873	69,500	6.05	2.84	4.41	210,151	95,493	305,644
1989-90	22,614	26,686	49,300	10.00	2.53	5.86	227,152	63,998	291,150
1990-91	30,815	24,685	55,500	8.74	1.65	5.55	268,479	38,173	306,652
1991-92	31,346	23,919	55,265	8.41	3.44	6.23	261,251	78,179	339,430
1992-93	31,867	36,808	68,675	4.94	0.63	2.60	157,225	20,427	177,652
FLORIDA GRAPEFRUIT									
1987-88	23,110	30,740	53,850	6.85	4.61	5.57	158,213	141,674	299,887
1988-89	23,902	30,848	54,750	6.03	3.24	4.45	144,068	99,806	243,874
1989-90	13,344	22,356	35,700	10.00	3.06	5.65	133,413	68,343	201,756
1990-91	23,923	21,177	45,100	8.83	2.08	5.66	211,244	44,084	255,328
1991-92	22,841	19,559	42,400	8.69	4.20	6.62	198,391	82,238	280,629
1992-93	23,156	31,994	55,150	4.86	0.92	2.57	112,485	29,438	141,923
CALIFORNIA GRAPEFRUIT									
1987-88	6,000	3,100	9,100	7.43	-0.41	4.76	44,392	-1,274	43,118
1988-89	5,500	2,500	8,000	7.33	-1.54	4.55	40,045	-3,866	36,179
1989-90	6,000	3,400	9,400	10.49	-1.13	6.28	63,060	-3,865	59,195
1990-91	5,200	2,800	8,000	8.42	-1.68	4.87	43,682	-4,714	38,968
1991-92	6,400	3,600	10,000	7.69	-0.91	4.58	49,088	-3,276	45,812
1992-93	5,900	3,600	9,500	5.50	-2.17	2.59	32,267	-7,820	24,447
TEXAS GRAPEFRUIT									
1987-88	2,785	1,015	3,800	6.61	3.32	5.73	18,409	3,370	21,779
1988-89	3,890	910	4,800	5.06	0.57	4.21	19,683	519	20,202
1989-90	1,605	395	2,000	7.34	0.56	6.00	11,781	221	12,002
1990-91	--	--	--	--	--	--	--	--	--
1991-92	65	--	65	13.52	--	13.52	879	--	879
1992-93	1,397	478	1,875	6.57	0.85	5.11	9,178	406	9,584
ARIZONA GRAPEFRUIT									
1987-88	1,300	650	1,950	4.58	-0.44	2.91	5,954	-286	5,668
1988-89	1,335	615	1,950	4.76	-1.57	2.76	6,355	-966	5,389
1989-90	1,665	535	2,200	11.35	-1.31	8.27	18,898	-701	18,197
1990-91	1,692	708	2,400	8.01	-1.69	5.15	13,553	-1,197	12,356
1991-92	2,040	760	2,800	6.32	-1.03	4.33	12,893	-783	12,110
1992-93	1,414	736	2,150	2.33	-2.17	0.79	3,295	-1,597	1,698

1/ 1992-93 preliminary.

CITRUS FRUITS: Utilization, season average on-tree price, and value by types, by states, crop years 1988-89 through 1992-93 1/

Crop year	Utilization of production			Price per box			Value of production		
	Fresh	Proc	Total	Fresh	Proc	Total	Fresh	Proc	Total
	1,000 boxes			Dollars per box			1,000 dollars		
FLORIDA ALL TANGERINES									
1988-89	1,639	1,261	2,900	19.10	4.24	12.64	31,305	5,347	36,652
1989-90	999	701	1,700	24.40	2.29	15.28	24,376	1,605	25,981
1990-91	1,227	723	1,950	25.30	3.19	17.10	31,043	2,306	33,349
1991-92	1,965	635	2,600	22.60	3.76	18.00	44,409	2,388	46,797
1992-93	2,065	735	2,800	18.30	0.43	13.61	37,790	316	38,106
FLORIDA EARLY TANGERINES 2/									
1988-89	320	130	450	22.10	1.96	16.28	7,072	255	7,327
1989-90	445	135	580	25.10	1.03	19.50	11,170	139	11,309
1990-91	380	200	580	25.60	1.82	17.40	9,728	364	10,092
1991-92	558	142	700	28.80	2.71	23.51	16,070	385	16,455
1992-93	788	212	1,000	20.20	0.45	16.01	15,918	95	16,013
FLORIDA DANCY TANGERINES									
1988-89	528	422	950	17.80	2.06	10.81	9,398	869	10,267
1989-90	347	133	480	17.80	1.45	13.27	6,177	193	6,370
1990-91	149	121	270	21.00	1.72	12.36	3,129	208	3,337
1991-92	442	188	630	16.80	3.18	12.74	7,426	598	8,024
1992-93	303	97	400	13.10	0.62	10.07	3,969	60	4,029
FLORIDA HONEY TANGERINES									
1988-89	791	709	1,500	18.80	5.96	12.73	14,871	4,226	19,097
1989-90	207	433	640	34.10	2.94	13.02	7,059	1,273	8,332
1990-91	698	402	1,100	26.00	4.31	18.07	18,148	1,733	19,881
1991-92	965	305	1,270	21.70	4.60	17.59	20,941	1,403	22,344
1992-93	974	426	1,400	18.40	0.37	12.91	17,922	158	18,080
CALIFORNIA TANGERINES									
1988-89	1,475	565	2,040	16.86	0.34	12.28	24,869	192	25,061
1989-90	1,240	410	1,650	22.28	0.85	16.95	27,627	348	27,975
1990-91	925	425	1,350	23.68	-1.78	15.67	21,904	-756	21,148
1991-92	1,680	760	2,440	18.29	-0.96	12.29	30,727	-730	29,997
1992-93	1,510	690	2,200	14.95	-2.63	9.44	22,575	-1,815	20,760
ARIZONA TANGERINES									
1988-89	520	130	650	16.96	-0.41	13.49	8,819	-53	8,766
1989-90	460	140	600	18.68	0.72	14.49	8,593	101	8,694
1990-91	497	103	600	20.18	-1.78	16.41	10,029	-183	9,846
1991-92	880	320	1,200	14.49	-1.01	10.36	12,751	-323	12,428
1992-93	702	248	950	14.75	-2.63	10.21	10,355	-652	9,703

1/ 1992-93 preliminary. 2/ Robinson variety--1988-89, Robinson and Sunburst varieties beginning in 1989-90.

OTHER CITRUS, LIMES AND LEMONS: Utilization, season average on-tree price, and value by types, by states, crop years 1988-89 through 1992-93 1/

Crop year	Utilization of production			Price per box			Value of production		
	Fresh	Proc	Total	Fresh	Proc	Total	Fresh	Proc	Total
	1,000 boxes			Dollars per box			1,000 dollars		
FLORIDA TANGELOS									
1988-89	1,348	2,452	3,800	8.25	5.25	6.31	11,121	12,873	23,994
1989-90	1,118	1,832	2,950	8.05	3.30	5.10	9,000	6,046	15,046
1990-91	1,186	1,464	2,650	9.70	3.21	6.11	11,504	4,699	16,203
1991-92	1,307	1,293	2,600	9.20	5.10	7.16	12,024	6,594	18,618
1992-93	1,316	1,734	3,050	5.60	0.77	2.85	7,370	1,335	8,705
FLORIDA K-EARLY CITRUS									
1988-89	251	69	320	7.05	0.94	5.73	1,770	65	1,835
1989-90	140	70	210	8.15	0.54	5.61	1,141	38	1,179
1990-91	111	49	160	7.40	-0.45	4.99	821	-22	799
1991-92	113	52	165	4.30	0.05	2.96	486	3	489
1992-93	133	52	185	7.80	-0.32	5.51	1,037	-17	1,020
FLORIDA LIMES									
1988-89	950	300	1,250	15.24	-1.22	11.29	14,478	-366	14,112
1989-90	1,010	640	1,650	14.83	-2.10	8.26	14,978	-1,344	13,634
1990-91	930	520	1,450	22.52	-1.26	13.99	20,944	-655	20,289
1991-92	1,070	530	1,600	14.08	-0.90	9.12	15,066	-477	14,589
1992-93	730	270	1,000	2.20	-2.18	1.02	1,606	-589	1,017
CALIFORNIA LEMONS									
1988-89	10,300	5,900	16,200	15.37	-1.11	9.37	158,311	-6,549	151,762
1989-90	10,500	5,300	15,800	18.23	0.16	12.17	191,415	848	192,263
1990-91	9,390	5,410	14,800	21.00	-0.75	13.05	197,190	-4,058	193,132
1991-92	9,090	6,010	15,100	16.71	-1.71	9.38	151,894	-10,277	141,617
1992-93	9,800	10,300	20,100	15.11	-1.48	6.61	148,078	-15,244	132,834
ARIZONA LEMONS									
1988-89	1,980	1,820	3,800	12.67	-1.15	6.05	25,087	-2,093	22,994
1989-90	1,764	1,036	2,800	17.93	-0.23	11.21	31,629	-238	31,391
1990-91	2,410	1,690	4,100	14.40	-0.60	8.22	34,704	-1,014	33,690
1991-92	2,958	2,142	5,100	18.01	-1.69	9.74	53,274	-3,620	49,654
1992-93	2,613	1,787	4,400	9.91	-1.50	5.28	25,895	-2,681	23,214

1/ 1992-93 preliminary.

FLORIDA LEMONS: Bearing acreage, production, and season average on-tree prices for crop years 1988 through 1992

Crop year 1/	True lemons		Meyer lemons		All lemons			
	Bearing acres	Production	Bearing acres	Production	Bearing acres	Production	Price per box	Value of production
	1,000 acres	1,000 boxes	1,000 acres	1,000 boxes	1,000 acres	1,000 boxes	Dollars	1,000 dollars
1988	1.1	433	0.1	47	1.2	480	5.30	2,548
1989	1.0	333	0.1	42	1.1	375	6.90	2,592
1990	0.9	210	0.1	40	1.0	250	6.80	1,697
1991	0.8	254	0.1	46	0.9	300	12.60	3,784
1992	0.6	215	0.1	40	0.7	255	6.15	1,565

1/ Crop year corresponds to calendar year.

**FLORIDA GRAPEFRUIT: Production by types, by areas of production,
crop years 1983-84 through 1992-93**

Crop year	White seedless			Colored seedless			Seedy		
	State	Interior	Indian River	State	Interior	Indian River	State	Interior	Indian River
1,000 boxes									
1983-84	23,000	10,200	12,800	13,400	4,300	9,100	4,500	4,400	100
1984-85	24,800	8,600	16,200	16,300	4,200	12,100	2,900	2,800	100
1985-86	25,600	10,700	14,900	18,000	5,500	12,500	3,150	2,950	200
1986-87	26,900	10,300	16,600	20,000	5,100	14,900	2,900	2,800	100
1987-88	29,200	11,700	17,500	21,900	6,200	15,700	2,750	2,650	100
1988-89	27,700	11,400	16,300	23,700	6,700	17,000	3,350	3,250	100
1989-90	18,000	5,000	13,000	16,300	3,300	13,000	1,400	1,300	100
1990-91	21,700	6,700	15,000	21,800	5,100	16,700	1,600	1,500	100
1991-92	19,100	7,200	11,900	22,100	5,800	16,300	1,200	1,100	100
1992-93	25,700	10,200	15,500	27,700	8,700	19,000	1,750	1,650	100

**FLORIDA GRAPEFRUIT: Season average on-tree prices per box, by utilization
of sales and areas of production, by types, crop years
1987-88 through 1992-93 1/**

Crop year and area	White seedless			Colored seedless		
	Fresh	Processing	All sales	Fresh	Processing	All sales
Dollars						
1987-88						
Interior	5.60	4.81	4.94	6.50	4.01	5.94
Indian River	7.20	4.79	5.63	7.00	3.81	5.90
State average	6.82	4.80	5.35	6.86	3.86	5.93
1988-89						
Interior	4.30	3.58	3.69	5.30	2.27	4.66
Indian River	6.70	3.55	4.76	6.20	2.23	4.70
State average	6.22	3.56	4.33	5.93	2.23	4.71
1989-90						
Interior	6.60	3.70	4.20	9.20	1.66	8.09
Indian River	12.00	3.49	5.58	9.80	1.94	5.85
State average	10.91	3.55	5.21	9.60	1.92	6.30
1990-91						
Interior	6.20	2.17	3.19	9.30	1.37	8.43
Indian River	9.10	2.16	5.08	8.80	1.42	6.41
State average	8.60	2.16	4.59	8.95	1.42	6.85
1991-92						
Interior	7.10	4.39	4.74	7.80	3.62	6.85
Indian River	10.70	4.44	7.51	8.20	3.74	6.91
State average	10.20	4.41	6.46	8.05	3.71	6.87
1992-93						
Interior	3.70	1.06	1.35	4.50	0.56	3.26
Indian River	5.70	1.05	2.54	4.80	0.58	3.05
State average	5.30	1.05	2.06	4.70	0.58	3.12

1/ 1992-93 preliminary.

**FLORIDA CITRUS PRODUCTS: Annual packs of citrus and all citrus feeds,
crop years 1978-79 through 1992-93**

Crop year	Oranges							All citrus	
	Concentrated juice 1/		Chilled juice		Canned juice		Canned sections	Feed	Molasses
	Product	Boxes used	Product	Boxes used	Product	Boxes used	Product		
1,000 gallons	1,000 boxes	1,000 gallons	1,000 boxes	1,000 cases 2/	1,000 boxes	1,000 cases 2/	1,000 tons		
1978-79	172,985	129,123	124,953	22,793	13,222	6,511	15	886	20
1979-80	231,210	173,229	134,782	25,430	13,869	6,656	18	1,091	36
1980-81	174,537	144,322	95,700	19,640	13,012	5,994	19	988	35
1981-82	133,294	104,355	84,597	16,293	11,503	4,058	14	724	23
1982-83	169,577	114,343	104,256	18,084	9,802	2,190	35	710	26
1983-84	121,216	94,016	92,814	16,981	9,084	2,269	NA	640	36
1984-85	118,472	86,112	81,445	14,903	7,425	1,185	NA	580	35
1985-86	132,406	96,061	NA	NA	7,596	1,361	NA	610	37
1986-87	145,056	96,182	NA	NA	8,122	947	NA	601	28
1987-88	169,973	110,206	NA	NA	7,256	904	NA	697	30
1988-89	174,717	113,729	NA	NA	8,164	1,141	NA	770	24
1989-90	90,285	73,640	NA	NA	6,640	660	NA	598	28
1990-91	151,396	104,136	NA	NA	7,130	569	NA	701	27
1991-92	145,421	93,931	NA	NA	7,652	456	NA	637	24
1992-93	208,662	132,154	NA	NA	7,922	355	NA	874	31

Crop year	Concentrated juice				Canned products				
	Grapefruit		Tangerines	Blended	Grapefruit		Tangerine juice	Blended juice	Citrus salad
	Product	Boxes used	Product	Product	Juice	Segments			
1,000 gallons	1,000 boxes	1,000 gallons		1,000 cases 2/					
1978-79	14,243	13,274	1,367	3	16,764	1,823	19	1,255	76
1979-80	19,443	18,506	2,142	1	16,604	1,966	17	1,314	74
1980-81	20,763	19,490	1,175	3	14,231	1,671	9	984	79
1981-82	21,869	20,052	924	18	15,725	1,344	6	727	69
1982-83	14,483	13,977	334	1	11,651	1,235	4	650	94
1983-84	19,291	18,728	636	0	9,513	NA	0	555	NA
1984-85	24,802	22,996	285	0	10,552	NA	1	615	NA
1985-86	24,162	21,572	368	0	9,948	NA	0	577	NA
1986-87	28,875	24,143	373	0	8,982	NA	0	533	NA
1987-88	31,906	26,690	583	0	7,724	NA	0	449	NA
1988-89	32,466	26,621	495	10	7,956	NA	0	434	NA
1989-90	21,774	19,405	371	0	5,986	NA	0	334	NA
1990-91	21,672	17,413	279	0	6,678	NA	0	450	NA
1991-92	19,458	16,099	297	5	5,822	NA	0	309	NA
1992-93	31,527	26,595	329	0	5,751	NA	0	197	NA

1/ 45.0 degrees Brix through 1979-80; 43.4 degrees Brix, 1980-81; 42.0 degrees Brix, 1981-82 and later seasons. 2/ Equiv. cases, 24 No. 2 cans.

SOURCE: See Page 45, Data Sources, Item 3

**FLORIDA CITRUS: Monthly and season average on-tree price per
box for crop years 1988-89 through 1992-93 1/**

Crop year	Oct	Nov	Dec	Jan	Feb	Mar	Season average
Dollars							
EARLY (INCLUDING NAVELS) AND MIDSEASON ORANGES							
ALL METHODS OF SALE							
1988-89	--	6.69	6.52	6.68	6.91	7.00	6.69
1989-90	--	6.79	6.21	5.82	5.68	--	6.01
1990-91	5.70	5.23	5.27	5.51	5.59	--	5.38
1991-92	8.47	5.24	5.18	5.40	5.74	--	5.44
1992-93	--	2.53	2.41	2.21	2.21	2.10	2.29
SALES FOR FRESH USE							
1988-89	--	8.45	7.85	6.15	5.85	6.45	7.65
1989-90	--	8.95	8.95	13.95	13.45	--	9.55
1990-91	7.10	6.70	8.80	11.00	10.20	--	8.30
1991-92	11.60	9.40	8.70	6.90	7.60	--	9.40
1992-93	--	5.70	4.80	2.55	2.80	1.50	4.50
SALES FOR PROCESSING							
1988-89	--	5.65	6.38	6.69	6.93	7.00	6.63
1989-90	--	5.60	5.90	5.70	5.50	--	5.74
1990-91	5.40	5.11	4.96	5.30	5.52	--	5.17
1991-92	3.90	4.40	4.90	5.35	5.70	--	5.03
1992-93	--	1.70	2.20	2.20	2.20	2.10	2.15

Crop year	Jan	Feb	Mar	Apr	May	Jun	Season average
Dollars							
LATE (VALENCIA) ORANGES							
ALL METHODS OF SALE							
1988-89	--	--	7.07	7.94	8.83	9.27	8.41
1989-90	5.80	5.70	6.26	7.31	7.10	--	6.53
1990-91	--	6.37	6.45	6.63	6.76	--	6.58
1991-92	--	6.09	6.24	6.62	7.00	7.66	6.65
1992-93	--	--	2.69	3.16	3.48	3.76	3.26
SALES FOR FRESH USE							
1988-89	--	--	6.05	6.75	8.35	12.95	7.55
1989-90	13.65	14.15	13.15	13.45	15.65	--	13.75
1990-91	--	8.60	8.40	8.40	9.10	--	8.60
1991-92	--	7.10	6.10	6.10	7.10	10.60	6.70
1992-93	--	--	1.80	2.20	2.90	5.10	2.50
SALES FOR PROCESSING							
1988-89	--	--	7.25	7.99	8.85	9.15	8.45
1989-90	5.70	5.50	6.00	7.15	6.95	--	6.34
1990-91	--	5.53	6.27	6.48	6.50	--	6.35
1991-92	--	5.70	6.25	6.65	7.00	7.40	6.65
1992-93	--	--	2.80	3.20	3.50	3.70	3.30

1/ 1992-93 preliminary.

FLORIDA CITRUS: Monthly and season average on-tree price per box for crop years 1988-89 through 1992-93 1/

Crop year	Oct	Nov	Dec	Jan	Feb	Mar	Season average
Dollars							
EARLY (INCLUDING NAVELS) AND MIDSEASON ORANGES							
ALL METHODS OF SALE							
1988-89	--	6.69	6.52	6.68	6.91	7.00	6.69
1989-90	--	6.79	6.21	5.82	5.68	--	6.01
1990-91	5.70	5.23	5.27	5.51	5.59	--	5.38
1991-92	8.47	5.24	5.18	5.40	5.74	--	5.44
1992-93	--	2.53	2.41	2.21	2.21	2.10	2.29
SALES FOR FRESH USE							
1988-89	--	8.45	7.85	6.15	5.85	6.45	7.65
1989-90	--	8.95	8.95	13.95	13.45	--	9.55
1990-91	7.10	6.70	8.80	11.00	10.20	--	8.30
1991-92	11.60	9.40	8.70	6.90	7.60	--	9.40
1992-93	--	5.70	4.80	2.55	2.80	1.50	4.50
SALES FOR PROCESSING							
1988-89	--	5.65	6.38	6.69	6.93	7.00	6.63
1989-90	--	5.60	5.90	5.70	5.50	--	5.74
1990-91	5.40	5.11	4.96	5.30	5.52	--	5.17
1991-92	3.90	4.40	4.90	5.35	5.70	--	5.03
1992-93	--	1.70	2.20	2.20	2.20	2.10	2.15
Crop year	Jan	Feb	Mar	Apr	May	Jun	Season average
Dollars							
LATE (VALENCIA) ORANGES							
ALL METHODS OF SALE							
1988-89	--	--	7.07	7.94	8.83	9.27	8.41
1989-90	5.80	5.70	6.26	7.31	7.10	--	6.53
1990-91	--	6.37	6.45	6.63	6.76	--	6.58
1991-92	--	6.09	6.24	6.62	7.00	7.66	6.65
1992-93	--	--	2.69	3.16	3.48	3.76	3.26
SALES FOR FRESH USE							
1988-89	--	--	6.05	6.75	8.35	12.95	7.55
1989-90	13.65	14.15	13.15	13.45	15.65	--	13.75
1990-91	--	8.60	8.40	8.40	9.10	--	8.60
1991-92	--	7.10	6.10	6.10	7.10	10.60	6.70
1992-93	--	--	1.80	2.20	2.90	5.10	2.50
SALES FOR PROCESSING							
1988-89	--	--	7.25	7.99	8.85	9.15	8.45
1989-90	5.70	5.50	6.00	7.15	6.95	--	6.34
1990-91	--	5.53	6.27	6.48	6.50	--	6.35
1991-92	--	5.70	6.25	6.65	7.00	7.40	6.65
1992-93	--	--	2.80	3.20	3.50	3.70	3.30

1/ 1992-93 preliminary.

**FLORIDA CITRUS: Monthly and season average on-tree price per
box for crop years 1988-89 through 1992-93 1/**

Crop year	Oct	Nov	Dec	Jan	Feb	Mar	Season average
Dollars							
EARLY (INCLUDING NAVELS) AND MIDSEASON ORANGES							
ALL METHODS OF SALE							
1988-89	--	6.69	6.52	6.68	6.91	7.00	6.69
1989-90	--	6.79	6.21	5.82	5.68	--	6.01
1990-91	5.70	5.23	5.27	5.51	5.59	--	5.38
1991-92	8.47	5.24	5.18	5.40	5.74	--	5.44
1992-93	--	2.53	2.41	2.21	2.21	2.10	2.29
SALES FOR FRESH USE							
1988-89	--	8.45	7.85	6.15	5.85	6.45	7.65
1989-90	--	8.95	8.95	13.95	13.45	--	9.55
1990-91	7.10	6.70	8.80	11.00	10.20	--	8.30
1991-92	11.60	9.40	8.70	6.90	7.60	--	9.40
1992-93	--	5.70	4.80	2.55	2.80	1.50	4.50
SALES FOR PROCESSING							
1988-89	--	5.65	6.38	6.69	6.93	7.00	6.63
1989-90	--	5.60	5.90	5.70	5.50	--	5.74
1990-91	5.40	5.11	4.96	5.30	5.52	--	5.17
1991-92	3.90	4.40	4.90	5.35	5.70	--	5.03
1992-93	--	1.70	2.20	2.20	2.20	2.10	2.15

Crop year	Jan	Feb	Mar	Apr	May	Jun	Season average
Dollars							
LATE (VALENCIA) ORANGES							
ALL METHODS OF SALE							
1988-89	--	--	7.07	7.94	8.83	9.27	8.41
1989-90	5.80	5.70	6.26	7.31	7.10	--	6.53
1990-91	--	6.37	6.45	6.63	6.76	--	6.58
1991-92	--	6.09	6.24	6.62	7.00	7.66	6.65
1992-93	--	--	2.69	3.16	3.48	3.76	3.26
SALES FOR FRESH USE							
1988-89	--	--	6.05	6.75	8.35	12.95	7.55
1989-90	13.65	14.15	13.15	13.45	15.65	--	13.75
1990-91	--	8.60	8.40	8.40	9.10	--	8.60
1991-92	--	7.10	6.10	6.10	7.10	10.60	6.70
1992-93	--	--	1.80	2.20	2.90	5.10	2.50
SALES FOR PROCESSING							
1988-89	--	--	7.25	7.99	8.85	9.15	8.45
1989-90	5.70	5.50	6.00	7.15	6.95	--	6.34
1990-91	--	5.53	6.27	6.48	6.50	--	6.35
1991-92	--	5.70	6.25	6.65	7.00	7.40	6.65
1992-93	--	--	2.80	3.20	3.50	3.70	3.30

1/ 1992-93 preliminary.

**FLORIDA CITRUS: Monthly and season average on-tree price per box
for crop years 1988-89 through 1992-93 1/**

Crop year	Sep	Oct	Nov	Dec	Jan	Feb	Mar	Apr	May	Jun	Season average
-----------	-----	-----	-----	-----	-----	-----	-----	-----	-----	-----	----------------

Dollars

WHITE SEEDLESS GRAPEFRUIT

ALL METHODS OF SALE

1988-89	--	--	4.71	4.39	4.64	4.25	4.05	4.51	4.67	--	4.33
1989-90	--	7.39	7.13	5.76	4.30	4.63	5.61	6.04	--	--	5.21
1990-91	6.50	5.53	5.55	3.93	4.53	4.00	4.95	5.23	3.47	--	4.59
1991-92	--	6.63	6.26	5.61	6.00	6.18	7.25	8.02	--	--	6.46
1992-93	--	4.46	4.05	3.64	2.35	2.34	1.27	1.87	1.37	--	2.06

SALES FOR FRESH USE

1988-89	--	--	5.41	5.95	6.20	6.28	6.27	6.56	6.77	--	6.22
1989-90	--	10.42	10.87	8.94	11.42	12.33	10.98	9.77	--	--	10.91
1990-91	8.00	8.00	9.30	7.00	8.60	8.50	9.30	9.50	6.80	--	8.60
1991-92	--	8.70	8.90	9.00	9.60	10.90	11.60	11.40	--	--	10.20
1992-93	--	6.20	6.30	6.20	3.00	5.60	5.10	6.00	2.50	--	5.30

SALES FOR PROCESSING

1988-89	--	--	3.48	3.48	3.57	3.62	3.60	3.45	3.46	--	3.56
1989-90	--	2.15	2.35	3.40	3.35	3.55	4.05	4.50	--	--	3.55
1990-91	1.55	1.87	2.18	2.20	2.15	2.39	2.38	1.71	1.19	--	2.16
1991-92	--	2.30	3.60	3.95	4.30	4.60	4.80	5.20	--	--	4.41
1992-93	--	-0.25	1.85	2.35	2.05	0.75	0.75	0.95	1.25	--	1.05

Crop year	Sep	Oct	Nov	Dec	Jan	Feb	Mar	Apr	May	Jun	Season average
-----------	-----	-----	-----	-----	-----	-----	-----	-----	-----	-----	----------------

Dollars

COLORED SEEDLESS GRAPEFRUIT

ALL METHODS OF SALE

1988-89	--	7.78	5.88	4.76	4.43	4.01	3.89	4.42	4.71	--	4.71
1989-90	7.54	5.44	5.30	7.69	5.84	5.25	8.55	--	--	--	6.30
1990-91	8.21	7.94	6.79	6.12	6.99	6.37	6.92	6.83	6.36	--	6.85
1991-92	9.19	6.77	6.88	6.48	6.18	6.40	7.33	8.22	--	--	6.87
1992-93	--	6.80	4.48	4.11	3.45	2.75	2.08	2.21	1.75	1.53	3.12

SALES FOR FRESH USE

1988-89	--	10.14	7.07	5.67	5.22	4.94	5.06	5.61	6.13	--	5.93
1989-90	8.80	6.68	6.53	10.30	10.81	12.09	15.97	--	--	--	9.60
1990-91	9.35	9.25	8.15	7.55	9.35	8.95	10.25	9.75	8.45	--	8.95
1991-92	10.15	7.65	7.85	7.45	7.25	7.85	8.85	9.55	--	--	8.05
1992-93	--	7.80	5.20	5.10	4.50	4.10	3.70	3.80	3.30	3.00	4.70

SALES FOR PROCESSING

1988-89	--	1.22	2.39	2.75	2.71	2.28	2.05	2.11	1.99	--	2.23
1989-90	0.80	1.20	1.60	1.45	1.50	1.95	3.30	--	--	--	1.92
1990-91	1.10	1.14	1.41	1.61	1.42	1.40	1.43	1.24	1.78	--	1.42
1991-92	2.05	2.05	2.70	3.20	3.80	4.15	4.25	4.60	--	--	3.71
1992-93	--	0.30	1.00	1.00	0.80	0.30	0.30	0.50	0.80	0.60	0.58

1/ 1992-93 preliminary.

**FLORIDA CITRUS: Monthly and season average on-tree price per box
for crop years 1988-89 through 1992-93 1/**

Crop year	Sep	Oct	Nov	Dec	Jan	Feb	Mar	Apr	May	Jun	Season average
-----------	-----	-----	-----	-----	-----	-----	-----	-----	-----	-----	----------------

Dollars

WHITE SEEDLESS GRAPEFRUIT

ALL METHODS OF SALE

1988-89	--	--	4.71	4.39	4.64	4.25	4.05	4.51	4.67	--	4.33
1989-90	--	7.39	7.13	5.76	4.30	4.63	5.61	6.04	--	--	5.21
1990-91	6.50	5.53	5.55	3.93	4.53	4.00	4.95	5.23	3.47	--	4.59
1991-92	--	6.63	6.26	5.61	6.00	6.18	7.25	8.02	--	--	6.46
1992-93	--	4.46	4.05	3.64	2.35	2.34	1.27	1.87	1.37	--	2.06

SALES FOR FRESH USE

1988-89	--	--	5.41	5.95	6.20	6.28	6.27	6.56	6.77	--	6.22
1989-90	--	10.42	10.87	8.94	11.42	12.33	10.98	9.77	--	--	10.91
1990-91	8.00	8.00	9.30	7.00	8.60	8.50	9.30	9.50	6.80	--	8.60
1991-92	--	8.70	8.90	9.00	9.60	10.90	11.60	11.40	--	--	10.20
1992-93	--	6.20	6.30	6.20	3.00	5.60	5.10	6.00	2.50	--	5.30

SALES FOR PROCESSING

1988-89	--	--	3.48	3.48	3.57	3.62	3.60	3.45	3.46	--	3.56
1989-90	--	2.15	2.35	3.40	3.35	3.55	4.05	4.50	--	--	3.55
1990-91	1.55	1.87	2.18	2.20	2.15	2.39	2.38	1.71	1.19	--	2.16
1991-92	--	2.30	3.60	3.95	4.30	4.60	4.80	5.20	--	--	4.41
1992-93	--	-0.25	1.85	2.35	2.05	0.75	0.75	0.95	1.25	--	1.05

Crop year	Sep	Oct	Nov	Dec	Jan	Feb	Mar	Apr	May	Jun	Season average
-----------	-----	-----	-----	-----	-----	-----	-----	-----	-----	-----	----------------

Dollars

COLORED SEEDLESS GRAPEFRUIT

ALL METHODS OF SALE

1988-89	--	7.78	5.88	4.76	4.43	4.01	3.89	4.42	4.71	--	4.71
1989-90	7.54	5.44	5.30	7.69	5.84	5.25	8.55	--	--	--	6.30
1990-91	8.21	7.94	6.79	6.12	6.99	6.37	6.92	6.83	6.36	--	6.85
1991-92	9.19	6.77	6.88	6.48	6.18	6.40	7.33	8.22	--	--	6.87
1992-93	--	6.80	4.48	4.11	3.45	2.75	2.08	2.21	1.75	1.53	3.12

SALES FOR FRESH USE

1988-89	--	10.14	7.07	5.67	5.22	4.94	5.06	5.61	6.13	--	5.93
1989-90	8.80	6.68	6.53	10.30	10.81	12.09	15.97	--	--	--	9.60
1990-91	9.35	9.25	8.15	7.55	9.35	8.95	10.25	9.75	8.45	--	8.95
1991-92	10.15	7.65	7.85	7.45	7.25	7.85	8.85	9.55	--	--	8.05
1992-93	--	7.80	5.20	5.10	4.50	4.10	3.70	3.80	3.30	3.00	4.70

SALES FOR PROCESSING

1988-89	--	1.22	2.39	2.75	2.71	2.28	2.05	2.11	1.99	--	2.23
1989-90	0.80	1.20	1.60	1.45	1.50	1.95	3.30	--	--	--	1.92
1990-91	1.10	1.14	1.41	1.61	1.42	1.40	1.43	1.24	1.78	--	1.42
1991-92	2.05	2.05	2.70	3.20	3.80	4.15	4.25	4.60	--	--	3.71
1992-93	--	0.30	1.00	1.00	0.80	0.30	0.30	0.50	0.80	0.60	0.58

1/ 1992-93 preliminary.

**FLORIDA CITRUS: Monthly and season average on-tree price per box
for crop years 1988-89 through 1992-93 1/**

Crop year	Sep	Oct	Nov	Dec	Jan	Feb	Mar	Apr	May	Jun	Season average
-----------	-----	-----	-----	-----	-----	-----	-----	-----	-----	-----	----------------

Dollars

WHITE SEEDLESS GRAPEFRUIT

ALL METHODS OF SALE

1988-89	--	--	4.71	4.39	4.64	4.25	4.05	4.51	4.67	--	4.33
1989-90	--	7.39	7.13	5.76	4.30	4.63	5.61	6.04	--	--	5.21
1990-91	6.50	5.53	5.55	3.93	4.53	4.00	4.95	5.23	3.47	--	4.59
1991-92	--	6.63	6.26	5.61	6.00	6.18	7.25	8.02	--	--	6.46
1992-93	--	4.46	4.05	3.64	2.35	2.34	1.27	1.87	1.37	--	2.06

SALES FOR FRESH USE

1988-89	--	--	5.41	5.95	6.20	6.28	6.27	6.56	6.77	--	6.22
1989-90	--	10.42	10.87	8.94	11.42	12.33	10.98	9.77	--	--	10.91
1990-91	8.00	8.00	9.30	7.00	8.60	8.50	9.30	9.50	6.80	--	8.60
1991-92	--	8.70	8.90	9.00	9.60	10.90	11.60	11.40	--	--	10.20
1992-93	--	6.20	6.30	6.20	3.00	5.60	5.10	6.00	2.50	--	5.30

SALES FOR PROCESSING

1988-89	--	--	3.48	3.48	3.57	3.62	3.60	3.45	3.46	--	3.56
1989-90	--	2.15	2.35	3.40	3.35	3.55	4.05	4.50	--	--	3.55
1990-91	1.55	1.87	2.18	2.20	2.15	2.39	2.38	1.71	1.19	--	2.16
1991-92	--	2.30	3.60	3.95	4.30	4.60	4.80	5.20	--	--	4.41
1992-93	--	-0.25	1.85	2.35	2.05	0.75	0.75	0.95	1.25	--	1.05

Crop year	Sep	Oct	Nov	Dec	Jan	Feb	Mar	Apr	May	Jun	Season average
-----------	-----	-----	-----	-----	-----	-----	-----	-----	-----	-----	----------------

Dollars

COLORED SEEDLESS GRAPEFRUIT

ALL METHODS OF SALE

1988-89	--	7.78	5.88	4.76	4.43	4.01	3.89	4.42	4.71	--	4.71
1989-90	7.54	5.44	5.30	7.69	5.84	5.25	8.55	--	--	--	6.30
1990-91	8.21	7.94	6.79	6.12	6.99	6.37	6.92	6.83	6.36	--	6.85
1991-92	9.19	6.77	6.88	6.48	6.18	6.40	7.33	8.22	--	--	6.87
1992-93	--	6.80	4.48	4.11	3.45	2.75	2.08	2.21	1.75	1.53	3.12

SALES FOR FRESH USE

1988-89	--	10.14	7.07	5.67	5.22	4.94	5.06	5.61	6.13	--	5.93
1989-90	8.80	6.68	6.53	10.30	10.81	12.09	15.97	--	--	--	9.60
1990-91	9.35	9.25	8.15	7.55	9.35	8.95	10.25	9.75	8.45	--	8.95
1991-92	10.15	7.65	7.85	7.45	7.25	7.85	8.85	9.55	--	--	8.05
1992-93	--	7.80	5.20	5.10	4.50	4.10	3.70	3.80	3.30	3.00	4.70

SALES FOR PROCESSING

1988-89	--	1.22	2.39	2.75	2.71	2.28	2.05	2.11	1.99	--	2.23
1989-90	0.80	1.20	1.60	1.45	1.50	1.95	3.30	--	--	--	1.92
1990-91	1.10	1.14	1.41	1.61	1.42	1.40	1.43	1.24	1.78	--	1.42
1991-92	2.05	2.05	2.70	3.20	3.80	4.15	4.25	4.60	--	--	3.71
1992-93	--	0.30	1.00	1.00	0.80	0.30	0.30	0.50	0.80	0.60	0.58

1/ 1992-93 preliminary.

**FLORIDA CITRUS: Monthly and season average on-tree price per box for
crop years 1988-89 through 1992-93 1/**

Crop year	Apr	May	Jun	Jul	Aug	Sep
LIMES						
Dollars						
ALL METHODS OF SALE						
1988-89	29.80	6.80	-0.20	1.30	2.84	4.87
1989-90	8.80	5.80	0.80	0.29	1.15	4.33
1990-91	41.50	28.50	3.01	1.47	8.54	9.20
1991-92	39.50	6.76	-0.24	1.49	6.40	12.57
1992-93	6.87	1.57	-1.97	0.81	2.22	2.81
SALES FOR FRESH USE						
1988-89	29.80	6.80	-0.20	1.40	4.90	13.90
1989-90	8.80	5.80	0.80	0.90	5.90	17.90
1990-91	41.50	28.50	4.40	2.40	16.90	19.90
1991-92	39.50	7.90	-0.10	3.90	10.90	16.90
1992-93	8.60	2.60	-1.40	1.60	3.10	3.60
SALES FOR PROCESSING						
1988-89	--	--	--	-1.20	-1.20	-1.22
1989-90	--	--	--	-0.95	-2.00	-2.05
1990-91	--	--	0.55	-0.40	-0.90	-0.90
1991-92	--	-2.60	-0.40	-0.40	-0.40	-2.60
1992-93	-2.80	-2.80	-2.80	-1.30	-1.30	-1.30

Crop year	Oct	Nov	Dec	Jan	Feb	Mar	Season average
LIMES							
Dollars							
ALL METHODS OF SALE							
1988-89	5.24	16.59	41.80	47.80	44.80	32.80	11.29
1989-90	6.24	5.69	28.80	40.80	68.80	49.80	8.26
1990-91	12.55	11.53	20.35	21.05	31.69	40.69	13.99
1991-92	14.23	14.65	18.84	17.92	25.35	23.50	9.12
1992-93	--	--	--	--	--	--	1.02
SALES FOR FRESH USE							
1988-89	14.90	18.90	41.80	47.80	44.80	32.80	15.24
1989-90	20.90	14.90	28.80	40.80	68.80	49.80	14.83
1990-91	23.90	24.90	32.90	32.90	44.90	55.90	22.52
1991-92	18.90	17.90	23.90	21.90	33.90	23.50	14.08
1992-93	--	--	--	--	--	--	2.20
SALES FOR PROCESSING							
1988-89	-1.23	-1.20	--	--	--	--	-1.22
1989-90	-2.65	-2.65	--	--	--	--	-2.10
1990-91	-2.65	-2.65	-2.65	-2.65	-2.65	-2.65	-1.26
1991-92	-2.60	-2.60	-2.60	-2.60	-2.60	--	-0.90
1992-93	--	--	--	--	--	--	-2.18

1/ 1992-93 preliminary.

**FLORIDA CITRUS: Monthly and season average on-tree price per box for
crop years 1988-89 through 1992-93 1/**

Crop year	Apr	May	Jun	Jul	Aug	Sep
LIMES						
Dollars						
ALL METHODS OF SALE						
1988-89	29.80	6.80	-0.20	1.30	2.84	4.87
1989-90	8.80	5.80	0.80	0.29	1.15	4.33
1990-91	41.50	28.50	3.01	1.47	8.54	9.20
1991-92	39.50	6.76	-0.24	1.49	6.40	12.57
1992-93	6.87	1.57	-1.97	0.81	2.22	2.81
SALES FOR FRESH USE						
1988-89	29.80	6.80	-0.20	1.40	4.90	13.90
1989-90	8.80	5.80	0.80	0.90	5.90	17.90
1990-91	41.50	28.50	4.40	2.40	16.90	19.90
1991-92	39.50	7.90	-0.10	3.90	10.90	16.90
1992-93	8.60	2.60	-1.40	1.60	3.10	3.60
SALES FOR PROCESSING						
1988-89	--	--	--	-1.20	-1.20	-1.22
1989-90	--	--	--	-0.95	-2.00	-2.05
1990-91	--	--	0.55	-0.40	-0.90	-0.90
1991-92	--	-2.60	-0.40	-0.40	-0.40	-2.60
1992-93	-2.80	-2.80	-2.80	-1.30	-1.30	-1.30

Crop year	Oct	Nov	Dec	Jan	Feb	Mar	Season average
LIMES							
Dollars							
ALL METHODS OF SALE							
1988-89	5.24	16.59	41.80	47.80	44.80	32.80	11.29
1989-90	6.24	5.69	28.80	40.80	68.80	49.80	8.26
1990-91	12.55	11.53	20.35	21.05	31.69	40.69	13.99
1991-92	14.23	14.65	18.84	17.92	25.35	23.50	9.12
1992-93	--	--	--	--	--	--	1.02
SALES FOR FRESH USE							
1988-89	14.90	18.90	41.80	47.80	44.80	32.80	15.24
1989-90	20.90	14.90	28.80	40.80	68.80	49.80	14.83
1990-91	23.90	24.90	32.90	32.90	44.90	55.90	22.52
1991-92	18.90	17.90	23.90	21.90	33.90	23.50	14.08
1992-93	--	--	--	--	--	--	2.20
SALES FOR PROCESSING							
1988-89	-1.23	-1.20	--	--	--	--	-1.22
1989-90	-2.65	-2.65	--	--	--	--	-2.10
1990-91	-2.65	-2.65	-2.65	-2.65	-2.65	-2.65	-1.26
1991-92	-2.60	-2.60	-2.60	-2.60	-2.60	--	-0.90
1992-93	--	--	--	--	--	--	-2.18

1/ 1992-93 preliminary.

**FLORIDA CITRUS: Monthly and season average on-tree price per box for
crop years 1988-89 through 1992-93 1/**

Crop year	Apr	May	Jun	Jul	Aug	Sep	
LIMES							Dollars
ALL METHODS OF SALE							
1988-89	29.80	6.80	-0.20	1.30	2.84	4.87	
1989-90	8.80	5.80	0.80	0.29	1.15	4.33	
1990-91	41.50	28.50	3.01	1.47	8.54	9.20	
1991-92	39.50	6.76	-0.24	1.49	6.40	12.57	
1992-93	6.87	1.57	-1.97	0.81	2.22	2.81	
SALES FOR FRESH USE							
1988-89	29.80	6.80	-0.20	1.40	4.90	13.90	
1989-90	8.80	5.80	0.80	0.90	5.90	17.90	
1990-91	41.50	28.50	4.40	2.40	16.90	19.90	
1991-92	39.50	7.90	-0.10	3.90	10.90	16.90	
1992-93	8.60	2.60	-1.40	1.60	3.10	3.60	
SALES FOR PROCESSING							
1988-89	--	--	--	-1.20	-1.20	-1.22	
1989-90	--	--	--	-0.95	-2.00	-2.05	
1990-91	--	--	0.55	-0.40	-0.90	-0.90	
1991-92	--	-2.60	-0.40	-0.40	-0.40	-2.60	
1992-93	-2.80	-2.80	-2.80	-1.30	-1.30	-1.30	
Crop year	Oct	Nov	Dec	Jan	Feb	Mar	Season average
LIMES							Dollars
ALL METHODS OF SALE							
1988-89	5.24	16.59	41.80	47.80	44.80	32.80	11.29
1989-90	6.24	5.69	28.80	40.80	68.80	49.80	8.26
1990-91	12.55	11.53	20.35	21.05	31.69	40.69	13.99
1991-92	14.23	14.65	18.84	17.92	25.35	23.50	9.12
1992-93	--	--	--	--	--	--	1.02
SALES FOR FRESH USE							
1988-89	14.90	18.90	41.80	47.80	44.80	32.80	15.24
1989-90	20.90	14.90	28.80	40.80	68.80	49.80	14.83
1990-91	23.90	24.90	32.90	32.90	44.90	55.90	22.52
1991-92	18.90	17.90	23.90	21.90	33.90	23.50	14.08
1992-93	--	--	--	--	--	--	2.20
SALES FOR PROCESSING							
1988-89	-1.23	-1.20	--	--	--	--	-1.22
1989-90	-2.65	-2.65	--	--	--	--	-2.10
1990-91	-2.65	-2.65	-2.65	-2.65	-2.65	-2.65	-1.26
1991-92	-2.60	-2.60	-2.60	-2.60	-2.60	--	-0.90
1992-93	--	--	--	--	--	--	-2.18

1/ 1992-93 preliminary.

**FLORIDA CITRUS: Monthly and season average on-tree price per
box for crop years 1988-89 through 1992-93 1/**

Crop year	Oct	Nov	Dec	Jan	Feb	Season average
TANGELOS						
Dollars						
ALL METHODS OF SALE						
1988-89	--	6.58	6.36	6.36	5.33	6.31
1989-90	--	6.54	5.07	4.24	4.94	5.10
1990-91	6.33	5.87	6.37	6.15	4.87	6.11
1991-92	8.01	7.85	6.93	6.59	--	7.16
1992-93	--	4.27	3.60	2.10	0.39	2.85
SALES FOR FRESH USE						
1988-89	--	8.25	7.25	11.15	10.65	8.25
1989-90	--	8.75	6.65	14.95	16.95	8.05
1990-91	10.50	8.70	9.50	11.50	10.00	9.70
1991-92	11.70	9.40	8.50	10.10	--	9.20
1992-93	--	6.50	5.30	5.50	2.50	5.60
SALES FOR PROCESSING						
1988-89	--	4.69	5.58	5.26	4.88	5.25
1989-90	--	2.75	3.69	2.82	4.64	3.30
1990-91	2.80	3.05	3.25	3.30	3.60	3.21
1991-92	3.45	4.95	5.15	5.35	--	5.10
1992-93	--	1.05	1.05	0.75	0.25	0.77

Crop year	Sep	Oct	Nov	Season average	Dec	Jan	Feb	Mar	Apr	Season average
Dollars					Dollars					
K-EARLY CITRUS FRUIT					TEMPLES					
ALL METHODS OF SALE					ALL METHODS OF SALE					
1988-89	--	5.85	5.33	5.73	--	6.70	5.09	5.15	5.28	5.46
1989-90	--	6.55	2.32	5.61	--	4.38	6.81	4.65	4.94	5.64
1990-91	5.79	3.89	4.79	4.99	8.64	8.75	5.32	5.70	--	6.31
1991-92	4.39	3.27	0.29	2.96	--	6.67	6.23	7.42	--	6.51
1992-93	7.60	6.21	0.55	5.51	--	3.68	1.45	1.17	--	2.00
SALES FOR FRESH USE					SALES FOR FRESH USE					
1988-89	--	7.15	6.65	7.05	--	7.95	5.65	7.45	7.45	7.15
1989-90	--	8.95	3.95	8.15	--	17.15	18.15	13.45	--	17.75
1990-91	8.00	6.50	6.50	7.40	13.30	12.60	8.10	10.10	--	10.60
1991-92	5.50	4.10	1.00	4.30	--	8.30	8.20	11.40	--	8.50
1992-93	8.50	8.50	1.50	7.80	--	6.10	2.90	3.50	--	4.40
SALES FOR PROCESSING					SALES FOR PROCESSING					
1988-89	--	0.90	1.01	0.94	--	4.55	4.93	5.01	5.26	4.95
1989-90	--	0.43	0.75	0.54	--	3.23	4.94	4.46	4.94	4.30
1990-91	-0.55	-0.35	-0.35	-0.45	3.05	3.45	4.40	4.65	--	4.32
1991-92	-0.05	-0.05	0.15	0.05	--	4.65	5.55	5.95	--	5.38
1992-93	-0.55	-0.25	-0.55	-0.32	--	0.45	0.55	0.55	--	0.53

1/ 1992-93 preliminary.

**FLORIDA CITRUS: Monthly and season average on-tree price per
box for crop years 1988-89 through 1992-93 1/**

Crop year	Oct	Nov	Dec	Jan	Feb	Season average
-----------	-----	-----	-----	-----	-----	----------------

TANGELOS

Dollars

ALL METHODS OF SALE

1988-89	--	6.58	6.36	6.36	5.33	6.31
1989-90	--	6.54	5.07	4.24	4.94	5.10
1990-91	6.33	5.87	6.37	6.15	4.87	6.11
1991-92	8.01	7.85	6.93	6.59	--	7.16
1992-93	--	4.27	3.60	2.10	0.39	2.85

SALES FOR FRESH USE

1988-89	--	8.25	7.25	11.15	10.65	8.25
1989-90	--	8.75	6.65	14.95	16.95	8.05
1990-91	10.50	8.70	9.50	11.50	10.00	9.70
1991-92	11.70	9.40	8.50	10.10	--	9.20
1992-93	--	6.50	5.30	5.50	2.50	5.60

SALES FOR PROCESSING

1988-89	--	4.69	5.58	5.26	4.88	5.25
1989-90	--	2.75	3.69	2.82	4.64	3.30
1990-91	2.80	3.05	3.25	3.30	3.60	3.21
1991-92	3.45	4.95	5.15	5.35	--	5.10
1992-93	--	1.05	1.05	0.75	0.25	0.77

Crop year	Sep	Oct	Nov	Season average	Dec	Jan	Feb	Mar	Apr	Season average
-----------	-----	-----	-----	----------------	-----	-----	-----	-----	-----	----------------

Dollars

K-EARLY CITRUS FRUIT

ALL METHODS OF SALE

1988-89	--	5.85	5.33	5.73
1989-90	--	6.55	2.32	5.61
1990-91	5.79	3.89	4.79	4.99
1991-92	4.39	3.27	0.29	2.96
1992-93	7.60	6.21	0.55	5.51

SALES FOR FRESH USE

1988-89	--	7.15	6.65	7.05
1989-90	--	8.95	3.95	8.15
1990-91	8.00	6.50	6.50	7.40
1991-92	5.50	4.10	1.00	4.30
1992-93	8.50	8.50	1.50	7.80

SALES FOR PROCESSING

1988-89	--	0.90	1.01	0.94
1989-90	--	0.43	0.75	0.54
1990-91	-0.55	-0.35	-0.35	-0.45
1991-92	-0.05	-0.05	0.15	0.05
1992-93	-0.55	-0.25	-0.55	-0.32

Dollars

TEMPLES

ALL METHODS OF SALE

--	6.70	5.09	5.15	5.28	5.46
--	4.38	6.81	4.65	4.94	5.64
8.64	8.75	5.32	5.70	--	6.31
--	6.67	6.23	7.42	--	6.51
--	3.68	1.45	1.17	--	2.00

SALES FOR FRESH USE

--	7.95	5.65	7.45	7.45	7.15
--	17.15	18.15	13.45	--	17.75
13.30	12.60	8.10	10.10	--	10.60
--	8.30	8.20	11.40	--	8.50
--	6.10	2.90	3.50	--	4.40

SALES FOR PROCESSING

--	4.55	4.93	5.01	5.26	4.95
--	3.23	4.94	4.46	4.94	4.30
3.05	3.45	4.40	4.65	--	4.32
--	4.65	5.55	5.95	--	5.38
--	0.45	0.55	0.55	--	0.53

1/ 1992-93 preliminary.

**FLORIDA CITRUS: Monthly and season average on-tree price per
box for crop years 1988-89 through 1992-93 1/**

Crop year	Oct	Nov	Dec	Jan	Feb	Season average
-----------	-----	-----	-----	-----	-----	----------------

TANGELOS

Dollars

ALL METHODS OF SALE

1988-89	--	6.58	6.36	6.36	5.33	6.31
1989-90	--	6.54	5.07	4.24	4.94	5.10
1990-91	6.33	5.87	6.37	6.15	4.87	6.11
1991-92	8.01	7.85	6.93	6.59	--	7.16
1992-93	--	4.27	3.60	2.10	0.39	2.85

SALES FOR FRESH USE

1988-89	--	8.25	7.25	11.15	10.65	8.25
1989-90	--	8.75	6.65	14.95	16.95	8.05
1990-91	10.50	8.70	9.50	11.50	10.00	9.70
1991-92	11.70	9.40	8.50	10.10	--	9.20
1992-93	--	6.50	5.30	5.50	2.50	5.60

SALES FOR PROCESSING

1988-89	--	4.69	5.58	5.26	4.88	5.25
1989-90	--	2.75	3.69	2.82	4.64	3.30
1990-91	2.80	3.05	3.25	3.30	3.60	3.21
1991-92	3.45	4.95	5.15	5.35	--	5.10
1992-93	--	1.05	1.05	0.75	0.25	0.77

Crop year	Sep	Oct	Nov	Season average	Dec	Jan	Feb	Mar	Apr	Season average
-----------	-----	-----	-----	----------------	-----	-----	-----	-----	-----	----------------

Dollars

K-EARLY CITRUS FRUIT

ALL METHODS OF SALE

1988-89	--	5.85	5.33	5.73
1989-90	--	6.55	2.32	5.61
1990-91	5.79	3.89	4.79	4.99
1991-92	4.39	3.27	0.29	2.96
1992-93	7.60	6.21	0.55	5.51

SALES FOR FRESH USE

1988-89	--	7.15	6.65	7.05
1989-90	--	8.95	3.95	8.15
1990-91	8.00	6.50	6.50	7.40
1991-92	5.50	4.10	1.00	4.30
1992-93	8.50	8.50	1.50	7.80

SALES FOR PROCESSING

1988-89	--	0.90	1.01	0.94
1989-90	--	0.43	0.75	0.54
1990-91	-0.55	-0.35	-0.35	-0.45
1991-92	-0.05	-0.05	0.15	0.05
1992-93	-0.55	-0.25	-0.55	-0.32

Dollars

TEMPLES

ALL METHODS OF SALE

--	6.70	5.09	5.15	5.28	5.46
--	4.38	6.81	4.65	4.94	5.64
8.64	8.75	5.32	5.70	--	6.31
--	6.67	6.23	7.42	--	6.51
--	3.68	1.45	1.17	--	2.00

SALES FOR FRESH USE

--	7.95	5.65	7.45	7.45	7.15
--	17.15	18.15	13.45	--	17.75
13.30	12.60	8.10	10.10	--	10.60
--	8.30	8.20	11.40	--	8.50
--	6.10	2.90	3.50	--	4.40

SALES FOR PROCESSING

--	4.55	4.93	5.01	5.26	4.95
--	3.23	4.94	4.46	4.94	4.30
3.05	3.45	4.40	4.65	--	4.32
--	4.65	5.55	5.95	--	5.38
--	0.45	0.55	0.55	--	0.53

1/ 1992-93 preliminary.

**FLORIDA CITRUS: Monthly and season average on-tree price per box
for crop years 1988-89 through 1992-93 1/**

Crop year	Sep	Oct	Nov	Dec	Jan	Season average	Oct	Nov	Dec	Jan	Feb	Season average
Dollars						Dollars						
EARLY TANGERINES 2/						DANCY TANGERINES						
ALL METHODS OF SALE						ALL METHODS OF SALE						
1988-89	--	18.51	15.51	13.97	--	16.28	--	15.16	12.94	6.35	3.39	10.81
1989-90	--	22.88	19.29	15.73	--	19.50	--	16.91	12.91	--	--	13.27
1990-91	20.40	19.03	16.43	8.61	7.60	17.40	16.58	12.61	11.06	10.24	16.38	12.36
1991-92	27.29	23.17	24.43	20.07	3.00	23.51	--	20.03	13.36	8.25	--	12.74
1992-93	--	13.48	18.63	14.26	--	16.01	--	12.03	10.38	8.90	--	10.07
SALES FOR FRESH USE						SALES FOR FRESH USE						
1988-89	--	25.00	21.00	19.50	--	22.10	--	21.00	19.00	13.00	13.00	17.80
1989-90	--	29.40	24.40	21.40	--	25.10	--	21.40	17.40	--	--	17.80
1990-91	29.10	25.70	24.70	21.10	21.10	25.60	22.10	20.40	22.20	21.10	21.10	21.00
1991-92	29.10	29.70	28.60	26.10	--	28.80	--	23.10	17.10	12.10	--	16.80
1992-93	--	18.10	22.70	18.10	--	20.20	--	14.10	13.10	13.10	--	13.10
SALES FOR PROCESSING						SALES FOR PROCESSING						
1988-89	--	1.40	2.15	2.35	--	1.96	--	2.50	2.15	1.92	1.97	2.06
1989-90	--	0.65	0.92	1.66	--	1.03	--	0.93	1.49	--	--	1.45
1990-91	0.50	1.81	2.08	2.10	2.20	1.82	0.00	1.60	2.00	2.10	2.20	1.72
1991-92	2.00	2.00	3.00	4.00	3.00	2.71	--	3.00	3.00	3.50	--	3.18
1992-93	--	-0.40	0.80	0.70	--	0.45	--	-0.40	0.70	0.50	--	0.62

Crop year	Dec	Jan	Feb	Mar	Apr	Season average
-----------	-----	-----	-----	-----	-----	----------------

Dollars

HONEY TANGERINES

ALL METHODS OF SALE

1988-89	--	13.32	12.61	11.60	14.55	12.73
1989-90	2.70	12.95	18.89	9.55	--	13.02
1990-91	17.29	19.70	16.44	19.44	--	18.07
1991-92	28.63	18.81	15.00	19.27	--	17.59
1992-93	--	15.74	9.13	13.26	17.30	12.91

SALES FOR FRESH USE

1988-89	--	22.50	18.50	16.00	20.00	18.80
1989-90	35.40	34.40	33.40	33.90	--	34.10
1990-91	35.60	27.10	22.10	26.10	--	26.00
1991-92	34.10	23.10	18.60	23.60	--	21.70
1992-93	--	22.10	13.10	19.10	25.10	18.40

SALES FOR PROCESSING

1988-89	--	5.71	6.00	6.11	6.11	5.96
1989-90	1.28	2.76	4.13	4.14	--	2.94
1990-91	3.55	4.10	4.65	5.40	--	4.31
1991-92	4.00	4.10	4.50	5.50	--	4.60
1992-93	--	0.50	0.00	0.60	0.80	0.37

1/ 1992-93 preliminary. 2/ Robinson variety through 1988-89, Robinson and Sunburst varieties beginning in 1989-90.

**FLORIDA CITRUS: Production by counties, areas
and types, 1992-93 season**

County and area	Round oranges			Grapefruit				Specialty fruit	All citrus 1/
	Early and mid	Late (Valencia)	All	Seedless		Seedy	All		
				White	Colored				
1,000 boxes									
County:									
Brevard	1,248	874	2,122	266	468	11	745	63	2,930
Broward	18	48	66	--	19	1	20	4	90
Charlotte	1,998	1,519	3,517	89	193	9	291	88	3,896
Collier	3,863	2,900	6,763	224	753	40	1,017	175	7,955
DeSoto	12,442	7,784	20,226	308	175	89	572	461	21,259
Glades	1,944	765	2,709	26	88	--	114	36	2,859
Hardee	15,704	4,253	19,957	221	226	50	497	415	20,869
Hendry	13,181	9,910	23,091	1,828	2,693	64	4,585	833	28,509
Highlands	7,387	10,495	17,882	1,485	446	363	2,294	1,257	21,433
Hillsborough	7,987	1,890	9,877	254	170	68	492	331	10,700
Indian River	4,403	3,226	7,629	7,277	7,283	26	14,586	337	22,552
Lake	1,348	183	1,531	43	188	15	246	306	2,083
Lee	1,679	1,399	3,078	107	174	9	290	41	3,409
Manatee	5,001	1,834	6,835	343	344	231	918	278	8,031
Martin	6,194	6,703	12,897	2,015	619	7	2,641	342	15,880
Okeechobee	1,785	643	2,428	333	130	4	467	64	2,959
Orange	905	455	1,360	17	48	13	78	143	1,581
Osceola	3,089	1,251	4,340	342	338	24	704	277	5,321
Palm Beach	2,393	1,251	3,644	980	718	7	1,705	539	5,888
Pasco	1,060	145	1,205	37	48	2	87	47	1,339
Pinellas	15	24	39	9	4	9	22	8	69
Polk	14,042	9,512	23,554	2,435	1,818	657	4,910	1,683	30,147
St. Lucie	5,831	4,815	10,646	6,931	10,576	47	17,554	710	28,910
Sarasota	380	206	586	95	135	3	233	58	877
Seminole	125	56	181	--	2	--	2	23	206
Volusia	136	51	187	34	25	1	60	6	253
Other 2/	142	8	150	1	19	--	20	10	180
State total	114,300	72,200	186,500	25,700	27,700	1,750	55,150	8,535	250,185
Area:									
Indian River District	12,375	10,300	22,675	15,500	19,000	100	34,600	1,177	58,452
Northern	3,630	849	4,479	110	330	30	470	532	5,480
Central	24,234	21,211	45,444	4,254	2,566	1,040	7,860	3,190	56,494
Western	41,528	15,991	57,520	1,230	1,054	450	2,734	1,550	61,805
Southern	32,533	23,849	56,382	4,606	4,750	130	9,486	2,086	67,954
State total	114,300	72,200	186,500	25,700	27,700	1,750	55,150	8,535	250,185

1/ Excludes limes and lemons. 2/ Citrus, Hernando, Marion, and Putnam counties.

**FLORIDA CITRUS: Total acreage by counties and types
of fruit as of January 1, 1992**

County	Round oranges			Grapefruit				Specialty fruit 2/	All citrus
	Early and mid	Late (Valencia)	All 1/	Seedless		Seedy	All 1/		
				White	Colored				
Acres									
Brevard	4,605	3,555	8,502	662	1,413	46	2,130	452	11,084
Broward	90	195	285	1	58	3	62	18	365
Charlotte	5,894	6,166	12,257	420	2,175	33	2,629	1,095	15,981
Citrus	124	16	173	0	15	0	18	9	200
Collier	13,230	15,942	29,333	849	2,365	108	3,560	1,274	34,167
Dade 3/	0	0	0	0	0	0	0	1,668	1,668
DeSoto	26,994	26,511	54,808	424	478	420	1,324	1,926	58,058
Glades	5,090	2,882	8,713	60	228	0	288	135	9,136
Hardee	34,088	13,938	49,292	282	559	187	1,030	2,308	52,630
Hendry	32,154	37,993	73,927	3,026	5,756	202	9,221	4,248	87,396
Hernando	749	15	968	1	22	0	24	43	1,035
Highlands	18,791	34,335	54,481	1,869	831	894	3,637	4,099	62,217
Hillsborough	16,745	5,852	24,893	319	404	248	1,013	1,214	27,120
Indian River	14,904	13,747	29,444	16,491	16,595	97	34,086	1,916	65,446
Lake	8,424	1,630	14,837	78	578	59	1,009	2,758	18,604
Lee	4,020	4,859	9,122	239	374	37	684	753	10,559
Manatee	11,694	6,291	18,000	461	744	724	1,929	990	20,919
Marion	624	21	738	0	21	0	23	156	917
Martin	15,057	23,600	39,477	3,893	1,379	42	5,371	1,487	46,335
Okeechobee	5,327	2,756	8,655	628	297	18	1,401	383	10,439
Orange	4,907	2,160	8,213	31	153	41	282	975	9,470
Osceola	8,432	4,120	13,053	832	685	49	1,590	982	15,625
Palm Beach	5,340	3,937	9,405	1,560	1,500	20	3,098	2,284	14,787
Pasco	7,540	1,550	10,177	72	159	18	264	387	10,828
Pinellas	49	75	124	16	8	34	58	26	208
Polk	34,412	29,517	77,519	3,390	2,749	1,701	8,680	5,700	91,899
Putnam	59	0	59	0	0	0	0	16	75
St. Lucie	19,950	26,248	48,633	18,291	30,248	191	51,156	5,328	105,117
Sarasota	763	690	1,454	141	270	10	421	190	2,065
Seminole	766	204	1,034	0	5	1	9	163	1,206
Sumter	0	0	0	0	0	0	0	0	0
Volusia	766	269	1,060	72	82	4	169	97	1,326
State total	301,588	269,074	608,636	54,108	70,151	5,187	135,166	43,080	786,882

1/ Includes unidentified variety acreage. 2/ Includes limes and lemons. 3/ Surveyed as of mid-March 1993.

**FLORIDA CITRUS: Total trees by counties and types
of fruit as of January 1, 1992**

County	Round oranges			Grapefruit				Specialty fruit 2/	All citrus
	Early and mid	Late (Valencia)	All 1/	Seedless		Seedy	All 1/		
				White	Colored				
	1,000 trees								
Brevard	477.1	412.6	949.7	55.8	111.2	3.6	171.5	38.2	1,159.4
Broward	6.3	14.7	21.0	0.1	3.6	0.1	3.8	1.1	25.9
Charlotte	683.5	756.5	1,476.3	43.5	249.3	2.8	295.7	167.7	1,939.7
Citrus	11.9	2.1	16.6	0.0	1.9	0.0	2.1	1.0	19.7
Collier	1,883.4	2,342.7	4,257.9	96.7	287.9	11.3	434.3	177.7	4,869.9
Dade 3/	0.0	0.0	0.0	0.0	0.0	0.0	0.0	290.4	290.4
DeSoto	3,344.8	3,267.6	6,825.3	36.2	53.1	41.0	130.6	250.2	7,206.1
Glades	644.4	405.6	1,195.9	6.8	35.8	0.0	42.6	27.3	1,265.8
Hardee	3,531.3	1,350.4	5,039.7	27.2	64.8	14.2	106.4	299.8	5,445.9
Hendry	4,728.8	5,685.3	11,021.5	354.6	752.1	21.4	1,160.3	615.4	12,797.2
Hernando	83.6	2.0	114.7	0.1	2.6	0.0	2.8	5.4	122.9
Highlands	2,333.9	3,969.8	6,516.0	161.0	79.3	69.9	314.9	464.5	7,295.4
Hillsborough	1,535.1	542.7	2,345.0	26.2	35.0	19.5	85.4	151.8	2,582.2
Indian River	1,550.9	1,406.8	3,071.3	1,384.9	1,595.5	8.5	3,095.1	210.6	6,377.0
Lake	1,073.3	204.5	1,888.2	10.3	75.6	6.0	123.3	387.0	2,398.5
Lee	495.9	658.6	1,197.9	21.1	46.4	3.2	77.4	88.8	1,364.1
Manatee	1,256.0	709.1	1,966.9	38.5	69.6	63.7	171.8	109.5	2,248.2
Marion	75.7	3.1	89.9	0.0	1.8	0.0	2.0	21.2	113.1
Martin	1,836.9	2,977.5	4,935.7	365.9	128.0	3.7	503.5	183.0	5,622.2
Okeechobee	585.1	262.5	931.3	50.5	26.6	1.3	126.8	40.9	1,099.0
Orange	558.9	203.3	910.8	2.6	14.7	3.4	27.1	111.6	1,049.5
Osceola	868.2	417.0	1,344.4	81.3	64.7	3.9	151.9	107.5	1,603.8
Palm Beach	656.7	479.4	1,156.4	159.8	149.3	2.2	313.0	246.3	1,715.7
Pasco	952.3	224.0	1,312.3	6.7	16.2	1.6	26.2	44.4	1,382.9
Pinellas	4.1	5.9	10.0	1.2	0.7	2.7	4.6	2.3	16.9
Polk	3,597.8	2,886.9	8,137.9	261.0	232.8	124.0	692.1	681.1	9,511.1
Putnam	8.7	0.0	8.7	0.0	0.0	0.0	0.0	2.9	11.6
St. Lucie	2,236.6	3,177.7	5,740.2	1,643.7	3,045.1	14.0	4,992.1	632.5	11,364.8
Sarasota	76.8	70.3	147.2	13.3	30.8	0.9	45.0	19.9	212.1
Seminole	72.2	19.1	98.5	0.0	0.7	0.1	1.1	10.7	110.3
Sumter	0.0	0.0	0.0	0.0	0.0	0.0	0.0	0.0	0.0
Volusia	76.1	20.5	99.1	5.8	8.7	0.3	15.8	6.8	121.7
State total	35,246.3	34,478.2	72,826.3	4,854.8	7,183.8	423.3	13,119.2	5,397.5	91,343.0

1/ Includes unidentified varieties. 2/ Includes limes and lemons. 3/ Surveyed as of mid-March 1993.

OTHER STATES' CITRUS: Acreage by states, types, and age groups

ARIZONA 1/

Type	Central	Western	Total
Acres			
Valencia	2,300	3,300	5,600
Navel and sweets	4,300	500	4,800
White grapefruit	1,700	250	1,950
Red blush grapefruit	1,850	2,100	3,950
Lemons	1,300	14,400	15,700
Tangerine types	3,000	2,000	5,000
Total	14,450	22,550	37,000

CALIFORNIA 2/

Year set	Navel and other oranges	Valencia oranges	White grapefruit	Red grapefruit	Lemons	Limes	Tangelos and Tangors	Tangerines	All citrus
Acres									
Pre-1981	97,341	62,071	4,211	11,024	43,415	871	4,071	2,379	225,383
1981	629	457	21	240	904	40	39	154	2,484
1982	798	465	90	618	729	38	49	251	3,038
1983	872	1,209	34	159	284	9	11	105	2,683
1984	1,466	1,407	18	259	165	3	55	85	3,458
1985	1,739	1,662	62	78	109	3	67	155	3,875
1986	3,044	1,481	41	474	326	3	75	112	5,556
1987	3,112	685	44	435	384	2	116	198	4,976
1988	2,719	956	107	635	147	--	25	246	4,835
1989	2,342	1,701	181	375	699	--	155	268	5,721
1990	2,797	1,544	132	271	446	--	46	144	5,380
1991	2,585	1,050	91	107	219	--	9	109	4,170
1992	1,229	210	63	199	219	--	6	87	2,013
Total	120,673	74,898	5,095	14,874	48,046	969	4,724	4,293	273,572

TEXAS 3/

Age in years	Oranges			Grapefruit				Other 5/	All citrus
	Early and mids	Valencia	Total	Ruby Red	Redder varieties 4/	Other	Total		
Acres									
1 to 3	2,660	420	3,080	1,630	6,180	200	8,010	--	11,090
4 to 7	2,320	160	2,480	1,300	4,210	10	5,520	--	8,000
8 to 11	760	70	830	720	1,800	10	2,530	--	3,360
12+	580	530	1,110	1,770	230	40	2,040	--	3,150
Total	6,320	1,180	7,500	5,420	12,420	260	18,100	100	25,700

1/ 1991-92 harvested acres. 2/ Acreage as of 1992. 3/ Acreage as of January 1, 1993. 4/ Includes Star Ruby, Henderson/Ray and Rio Red. 5/ Includes lemons, limes, tangelos and tangerines.

SOURCES: See page 45, Data Sources, Item 4.

ORANGES AND TANGERINES: Orange receipts at 19 U.S. cities; tangerine receipts at 18 U.S. cities, September 1, 1992 through July 31, 1993, by source

City	Florida		California		Arizona		Texas		Others 1/		Total	
	Rail	Truck	Rail	Truck	Rail	Truck	Rail	Truck	Rail & boat	Truck	Rail & boat	Truck
1,000 cartons												
ORANGES												
U.S. cities:												
Atlanta	--	667	--	430	--	--	--	--	--	1	--	1,098
Baltimore-Washington	72	328	272	986	10	11	--	--	--	2	354	1,327
Boston	--	306	1,696	665	--	--	--	--	--	6	1,696	977
Buffalo	--	25	70	418	--	1	--	--	--	--	70	444
Chicago	13	1,382	2,025	2,374	--	15	--	--	--	2	2,038	3,773
Cincinnati	--	84	41	868	--	12	--	--	--	--	41	964
Columbia	--	76	--	41	--	--	--	--	--	--	--	117
Dallas	--	10	--	475	--	58	--	13	--	3	--	559
Denver	--	--	--	--	--	--	--	--	--	--	--	--
Detroit	--	210	--	1,086	--	--	--	--	--	2	--	1,298
Los Angeles	--	217	--	5,211	--	28	--	33	--	37	--	5,526
Miami	--	231	--	128	--	--	--	--	--	--	--	359
New Orleans	--	198	--	299	--	13	--	--	--	--	--	510
New York-Newark	860	831	2,895	1,455	157	14	--	--	--	--	3,912	2,305
Philadelphia	89	614	1,536	800	98	3	--	--	--	8	1,723	1,425
Pittsburgh	--	107	106	667	3	--	--	--	--	--	109	774
St. Louis	--	50	--	759	--	--	--	--	--	1	--	810
San Francisco-Oakland	--	414	--	2,649	--	19	--	121	--	1	--	3,204
Seattle-Tacoma	--	39	--	1,450	--	4	--	1	--	1	--	1,495
Total	1,034	5,794	8,641	20,761	268	178	--	168	--	64	9,943	26,965
Tangerines												
U.S. cities:												
Atlanta	--	105	--	3	--	--	--	--	--	5	--	113
Baltimore-Washington	10	98	--	--	--	--	--	--	--	--	10	98
Boston	--	139	12	7	--	--	--	--	--	--	12	146
Buffalo	--	25	--	18	--	--	--	--	--	5	--	48
Chicago	2	197	31	70	--	--	--	--	--	15	33	282
Cincinnati	--	38	--	22	--	2	--	--	--	8	--	70
Columbia	--	11	--	--	--	--	--	--	--	--	--	11
Dallas	--	1	--	11	--	2	--	--	--	6	--	20
Denver	--	--	--	--	--	--	--	--	--	--	--	--
Detroit	--	60	--	5	--	--	--	--	--	1	--	66
Los Angeles	--	163	--	423	--	38	--	--	--	4	--	628
Miami	--	23	--	1	--	--	--	--	--	--	--	24
New Orleans	--	30	--	39	--	16	--	--	--	2	--	87
New York-Newark	93	376	31	8	--	--	--	--	--	1	124	385
Philadelphia	1	118	12	10	--	--	--	--	--	5	13	133
Pittsburgh	--	33	--	5	--	--	--	--	--	2	--	40
St. Louis	--	24	--	1	--	--	--	--	--	1	--	26
San Francisco-Oakland	--	247	--	216	--	77	--	--	--	13	--	553
Seattle-Tacoma	--	24	--	85	--	--	--	--	--	--	--	109
Total	106	1,712	86	924	--	135	--	--	--	68	192	2,839

1/ Principal source of receipts of oranges at U.S. cities were Central America, Israel, South Africa, Mexico, and Australia. Principal source of receipts of tangerines at U.S. cities were Mexico and Spain.

SOURCE: See Page 45, Data Sources, Item 5.

GRAPEFRUIT, TANGELOS, AND TEMPLES: Grapefruit receipts at 19 U.S. cities; tangelo and Temple receipts
16 U.S. cities, September 1, 1992 through July 31, 1993, by source

City	Florida		California		Arizona		Texas		Others 1/		Total	
	Rail	Truck	Rail	Truck	Rail	Truck	Rail	Truck	Rail & boat	Truck	Rail & boat	Truck
1,000 cartons												
GRAPEFRUIT												
U.S. cities:												
Atlanta	--	355	--	52	--	--	--	11	--	2	--	420
Baltimore-Washington	133	522	6	74	--	10	--	--	--	9	139	815
Boston	--	670	36	41	--	2	--	--	--	2	36	715
Buffalo	--	170	--	16	--	1	--	--	--	--	--	187
Chicago	34	815	113	365	2	--	--	6	--	2	149	1,188
Cincinnati	--	238	--	86	--	6	--	18	--	--	--	348
Columbia	--	28	--	5	--	1	--	--	--	--	--	34
Dallas	--	22	--	28	--	20	--	48	--	--	--	118
Denver	--	--	--	--	--	--	--	--	--	--	--	--
Detroit	--	520	--	115	--	6	--	--	--	2	--	643
Los Angeles	--	300	--	1,018	--	109	--	25	--	2	--	1,454
Miami	--	152	--	14	--	--	--	--	--	--	--	166
New Orleans	--	107	--	32	--	5	--	2	--	--	--	146
New York-Newark	779	1,006	144	110	11	93	--	--	--	2	934	1,211
Philadelphia	157	500	52	57	2	2	--	7	--	5	211	571
Pittsburgh	--	285	--	45	--	--	--	1	--	--	--	331
St. Louis	--	327	--	16	--	19	--	6	--	--	--	368
San Francisco-Oakland	--	269	--	702	--	43	--	87	--	--	--	1,101
Seattle-Tacoma	--	182	--	319	--	3	--	20	--	--	--	524
Total	1,103	6,468	351	3,095	15	320	--	231	--	26	1,469	10,140

City	TANGELOS - Truck					TEMPLES - Truck		
	Florida	Arizona & California	Texas	Mexico	Total	Florida	Other	Total
1,000 cartons								
U.S. cities:								
Atlanta	35	4	--	--	39	31	--	31
Baltimore-Washington	52	6	--	--	58	44	--	44
Boston	29	3	--	--	32	28	--	28
Buffalo	11	--	--	--	11	10	--	10
Chicago	52	14	--	--	66	64	--	64
Cincinnati	38	12	--	--	50	12	--	12
Columbia	10	2	--	--	12	4	--	4
Dallas	1	6	--	--	7	--	--	--
Denver	--	--	--	--	--	--	--	--
Detroit	48	1	--	--	49	19	--	19
Los Angeles	--	86	--	--	86	--	--	--
Miami	4	2	--	--	6	1	--	1
New Orleans	4	1	--	--	5	--	--	--
New York-Newark	87	3	--	--	90	50	--	50
Philadelphia	46	5	--	--	51	48	--	48
Pittsburgh	24	--	--	--	24	17	--	17
St. Louis	12	--	--	--	12	4	--	4
San Francisco-Oakland	--	49	--	--	49	--	--	--
Seattle-Tacoma	14	14	--	--	28	--	--	--
Total	467	208	--	--	675	332	--	332

1/ Principal source of receipts of grapefruit at U.S. cities were Central America, Israel, South Africa, Mexico, and Australia.

SOURCE: See page 45, Data Sources, Item 5.

ORANGES: Total fresh shipments in U.S. and to Canada by states of origin and imports to U.S., monthly for crop years 1988-89 through 1992-93

Crop year	Sep	Oct	Nov	Dec	Jan	Feb	Mar	Apr	May	Jun	Jul	Aug	Total
FLORIDA													
1,000 cartons													
1988-89	2	748	2,504	4,455	1,380	1,298	1,411	1,439	1,281	492	98	40	15,148
1989-90 1/	71	980	2,187	3,891	938	629	592	453	216	43	--	15	10,015
1990-91	493	1,184	2,709	3,885	2,122	2,237	694	3,213	2,486	487	66	3	19,579
1991-92	753	2,602	3,661	3,931	1,720	1,416	1,580	2,081	1,297	397	81	25	19,544
1992-93	31	47	809	4,699	2,097	1,799	1,960	1,783	1,687	770	188	1	15,871
ARIZONA													
1988-89	--	2	246	373	133	55	146	230	437	215	64	6	1,907
1989-90	--	6	164	259	118	30	261	243	338	262	5	--	1,686
1990-91	--	--	168	389	124	121	744	385	76	25	10	--	2,042
1991-92	--	--	201	368	261	217	155	265	630	391	95	39	2,622
1992-93	27	25	297	378	155	119	189	266	479	125	35	15	2,110
CALIFORNIA 2/													
1988-89	3,830	3,948	4,011	8,655	7,164	8,195	8,899	10,582	6,315	3,892	4,022	2,599	72,112
1989-90	3,890	3,385	5,254	7,749	7,042	7,181	8,560	7,446	6,733	5,368	3,103	2,717	68,428
1990-91	4,057	3,273	4,405	8,033	1,779	1,491	467	267	825	1,568	1,644	870	28,679
1991-92	1,389	846	2,519	5,817	4,855	7,673	8,465	7,619	7,006	3,801	3,682	3,978	57,650
1992-93	3,237	3,847	4,855	6,169	7,065	7,759	8,084	6,873	5,783	2,205	2,040	2,341	60,258
TEXAS													
1988-89	--	237	288	640	550	419	492	118	--	--	--	--	2,744
1989-90	--	157	363	662	6	--	--	--	--	--	--	--	1,188
1990-91	--	--	--	--	--	--	--	--	--	--	--	--	--
1991-92	--	--	--	29	--	--	--	--	--	--	--	--	29
1992-93	2	33	64	280	181	65	34	21	--	--	--	--	680
MEXICO 3/													
1988-89	--	41	11	4	12	9	15	11	--	--	--	--	103
1989-90	1	7	1	15	90	59	13	--	--	--	--	--	186
1990-91	--	--	--	13	69	157	286	423	271	96	--	--	1,315
1991-92	--	32	38	7	21	30	29	7	14	7	--	--	185
1992-93	--	--	4	18	25	18	6	--	--	--	--	--	71
OTHER COUNTRIES 4/													
1988-89	1	10	35	36	33	12	31	56	62	41	--	--	317
1989-90	3	1	8	10	7	12	132	68	40	4	36	26	347
1990-91	23	3	4	4	18	193	202	732	127	--	--	--	1,306
1991-92	26	4	10	270	7	15	29	18	29	42	--	--	450
1992-93	35	8	2	1	4	59	39	19	--	--	--	--	167
TOTAL													
1988-89	3,833	4,986	7,095	14,163	9,272	9,988	10,994	12,436	8,095	4,640	4,184	2,645	92,331
1989-90	3,965	4,536	7,977	12,586	8,201	7,911	9,558	8,210	7,327	5,677	3,144	2,758	81,850
1990-91	4,573	4,460	7,286	12,324	4,112	4,119	2,393	5,020	3,785	2,176	1,720	873	52,921
1991-92	2,168	3,484	6,429	10,422	6,864	9,351	10,258	9,990	8,976	4,638	3,858	4,042	80,480
1992-93	3,332	3,960	6,031	11,545	9,527	9,819	10,312	8,962	7,949	3,100	2,263	2,357	79,157

1/ August shipments 1990-91 season. 2/ Includes small quantity tangelos and tangerines. 3/ See page 36 for footnote. 4/ Central America, Dominican Republic, Israel, Italy, Morocco, South Africa, Spain, and West Indies.

SOURCE: See Page 45, Data Sources, Item 5.

GRAPEFRUIT: Total fresh shipments in U.S. and to Canada by states of origin and imports to U.S., monthly for crop years 1988-89 through 1992-93

Crop year	Sep	Oct	Nov	Dec	Jan	Feb	Mar	Apr	May	Jun	Jul	Aug	Total
1,000 cartons													
FLORIDA													
1988-89	47	1,709	2,815	3,694	2,671	3,007	3,318	2,841	1,948	635	31	2	22,718
1989-90 1/	578	2,620	2,521	3,345	2,012	1,964	1,342	398	21	2	--	40	14,843
1990-91	1,231	2,229	3,195	3,690	3,377	3,268	3,508	2,375	1,280	447	227	15	24,842
1991-92	1,437	2,717	3,252	4,057	3,414	3,171	3,271	1,741	234	5	--	--	23,299
1992-93	47	80	921	3,945	2,899	3,199	3,650	3,072	1,933	1,001	337	--	20,984
ARIZONA 2/													
1988-89	--	--	--	--	10	--	12	2	26	10	3	--	63
1989-90	--	--	--	9	1	1	6	15	34	--	1	--	67
1990-91	--	1	2	--	--	2	6	10	58	21	--	--	100
1991-92	--	--	--	--	--	--	1	39	91	77	17	--	225
1992-93	--	--	--	--	--	--	3	1	12	3	13	9	41
CALIFORNIA 2/													
1988-89	79	2	--	--	13	22	10	8	16	50	163	127	490
1989-90	22	--	2	4	22	22	13	13	57	91	79	70	395
1990-91	22	5	2	--	--	2	7	12	67	47	70	50	284
1991-92	33	16	--	--	--	--	1	13	54	56	105	66	344
1992-93	29	5	1	--	12	42	53	53	36	26	24	41	322
TEXAS													
1988-89	--	428	1,032	1,371	1,397	1,333	1,202	133	--	--	--	--	6,896
1989-90	--	812	1,528	34	--	--	--	--	--	--	--	--	2,651
1990-91	--	--	--	--	--	--	--	--	--	--	--	--	--
1991-92	--	--	--	65	--	--	--	--	--	--	--	--	65
1992-93	--	48	191	665	651	429	461	242	--	--	--	--	2,687
MEXICO 3/													
1988-89	--	--	--	--	--	--	--	--	--	--	--	4	4
1989-90	12	--	--	--	1	--	--	--	--	--	--	--	13
1990-91	--	--	--	--	--	--	--	--	--	--	--	--	--
1991-92	--	--	--	--	--	--	--	--	--	--	--	--	--
1992-93	--	--	--	--	--	--	--	--	1	--	--	--	1
OTHER COUNTRIES													
1988-89	--	4	126	24	24	18	7	2	3	4	--	--	212
1989-90	--	20	42	44	33	44	2	50	8	--	1	--	244
1990-91	--	40	106	90	115	3,574	17	2	1	--	--	--	3,946
1991-92	35	13	131	158	159	88	31	20	--	--	--	--	635
1992-93	--	12	115	162	152	77	61	89	--	--	--	--	668
TOTAL													
1988-89	126	2,143	3,973	5,089	4,115	4,380	4,549	2,986	1,993	699	197	133	30,383
1989-90	612	2,917	3,377	4,930	2,103	2,031	1,363	476	120	93	81	110	18,213
1990-91	1,253	2,275	3,305	3,780	3,492	6,846	3,538	2,399	1,406	515	297	65	29,171
1991-92	1,505	2,746	3,383	4,280	3,573	3,259	3,304	1,813	379	138	122	66	24,568
1992-93	76	145	1,228	4,772	3,714	3,747	4,128	3,457	1,982	1,030	374	50	24,703

1/ August shipments 1990-91 season. 2/ Rail only, truck shipments not available. 3/ See page 36 for footnote.

SOURCE: See Page 45, Data Sources, Item 5.

TANGERINES, TANGELOS, TEMPLES, AND K-EARLY: Total fresh shipments in U.S. and to Canada by states of origin and imports to U.S., monthly for crop years 1988-89 through 1992-93

Crop year	Sep	Oct	Nov	Dec	Jan	Feb	Mar	Apr	May	Jun	Jul	Aug	Total
1,000 cartons													
TANGERINE													
Florida													
1988-89	--	158	497	811	497	486	432	156	19	3	--	--	3,059
1989-90	3	195	548	710	220	98	15	--	--	--	--	--	1,789
1990-91	77	342	387	211	376	474	180	17	1	--	--	--	2,065
1991-92	22	302	624	700	746	635	427	15	1	2	--	--	3,474
1992-93	1	11	400	1,648	1,134	1,095	817	175	3	1	--	--	5,285
Arizona 1/													
1988-89	--	--	--	2	7	10	7	--	--	--	--	--	26
1989-90	--	--	--	4	1	1	--	--	--	--	--	--	6
1990-91	--	--	--	--	--	1	--	--	--	--	--	--	1
1991-92	--	--	--	--	--	2	3	--	--	--	--	--	5
1992-93	--	--	--	--	--	--	--	--	--	--	--	--	--
California 2/													
1988-89	--	--	--	--	--	--	--	--	--	--	--	--	--
1989-90	--	--	--	--	--	--	--	--	--	--	--	--	--
1990-91	--	--	--	--	--	--	--	--	--	--	--	--	--
1991-92	--	--	--	--	--	--	--	--	--	--	--	--	--
1992-93	--	--	3	10	--	5	--	--	--	--	--	--	18
Mexico 3/													
1988-89	--	121	224	277	62	8	--	--	--	--	--	--	692
1989-90	--	93	208	226	85	2	--	--	--	--	--	--	614
1990-91	--	104	230	227	26	--	--	--	--	--	--	--	587
1991-92	--	100	197	119	22	3	--	--	--	--	--	--	441
1992-93	--	139	251	231	49	7	--	--	--	--	--	--	677
TANGELOS: Florida													
1988-89	--	15	594	1,270	425	32	1	1	--	--	--	--	2,338
1989-90	--	23	525	1,190	161	5	--	--	--	--	--	--	1,904
1990-91	4	136	555	900	346	35	1	--	--	--	--	--	1,977
1991-92	--	107	659	1,169	273	4	--	1	--	--	--	--	2,213
1992-93	--	--	174	1,160	478	33	6	--	--	--	--	--	1,851
TEMPLES: Florida													
1988-89	--	--	--	55	793	498	146	5	--	--	--	--	1,497
1989-90	--	--	--	2	46	155	10	--	--	--	--	--	213
1990-91	--	--	--	84	546	506	210	20	--	--	--	--	1,366
1991-92	--	--	--	28	730	595	123	4	--	--	--	--	1,480
1992-93	--	--	--	30	645	641	295	40	--	--	--	--	1,651
K-EARLY: Florida													
1988-89	--	370	139	93	--	--	--	--	--	--	--	--	602
1989-90 4/	4	208	50	--	--	--	--	--	--	--	--	14	276
1990-91	109	87	8	--	--	--	--	--	--	--	--	--	204
1991-92	41	160	8	--	--	--	--	--	--	--	--	--	209
1992-93	14	--	--	--	--	--	--	--	--	--	--	--	14

1/ Rail only, truck shipments not available. 2/ Data prior to 1992-93 unavailable. 3/ See page 36 for footnote. 4/ August shipments 1990-91 season.

SOURCE: See Page 45, Data Sources, Item 5.

**ORANGES, TANGELOS, AND TEMPLES: Total fresh shipments exported by states of origin,
monthly for crop years 1988-89 through 1992-93**

Crop year	Sep	Oct	Nov	Dec	Jan	Feb	Mar	Apr	May	Jun	Jul	Aug	Total
1,000 cartons													
ORANGES													
Florida 1/													
1988-89	--	--	9	5	--	2	41	70	28	--	--	--	155
1989-90	--	48	187	191	63	33	37	18	2	--	--	--	579
1990-91	28	102	293	196	164	257	425	478	183	22	3	--	2,151
1991-92	30	158	312	176	184	113	234	164	100	20	--	--	1,491
1992-93	--	--	187	195	176	152	202	235	122	41	3	--	1,313
Arizona													
1988-89	--	--	18	15	6	--	321	236	78	13	--	--	687
1989-90	--	--	2	2	2	--	--	2	17	20	--	--	45
1990-91	--	--	12	12	2	33	434	159	13	2	--	--	667
1991-92	--	10	13	36	23	20	302	441	234	66	8	--	1,153
1992-93	3	18	13	15	8	84	479	277	63	10	1	--	971
California													
1988-89	1,068	906	637	1,115	1,582	1,192	1,542	2,113	2,409	2,053	2,051	1,411	18,079
1989-90	1,019	732	1,147	1,325	1,406	1,365	2,462	1,850	3,322	3,116	1,248	1,130	20,122
1990-91	1,614	833	446	1,082	516	294	172	373	1,155	1,419	795	272	8,971
1991-92	292	147	510	695	1,193	1,980	2,235	2,003	3,971	2,162	1,129	1,113	17,430
1992-93	1,884	1,796	1,284	2,038	2,898	3,236	4,048	4,496	6,088	4,770	4,198	2,906	39,642
Total 2/													
1988-89	1,068	906	664	1,335	1,588	1,194	1,904	2,419	2,515	2,066	2,051	1,411	18,921
1989-90	1,019	780	1,336	1,518	1,471	1,398	2,499	1,870	3,341	3,136	1,248	1,130	20,746
1990-91	1,642	935	751	1,290	682	584	1,031	1,010	1,351	1,443	798	272	11,789
1991-92	322	315	835	907	1,400	2,113	2,771	2,608	4,305	2,248	1,137	1,113	20,074
1992-93	1,887	1,814	1,484	2,248	3,082	3,472	4,729	5,008	6,273	4,821	4,202	2,906	41,926
TANGELOS: Florida 1/													
1988-89	--	--	--	1	1	--	--	--	--	--	--	--	2
1989-90	--	--	27	21	9	--	--	--	--	--	--	--	57
1990-91	--	3	16	7	15	--	--	--	--	--	--	--	41
1991-92	--	3	20	17	23	--	--	--	--	--	--	--	63
1992-93	--	--	7	14	19	2	1	--	--	--	--	--	43
TEMPLES: Florida 1/													
1988-89	--	--	--	--	--	--	--	--	--	--	--	--	--
1989-90	--	--	--	--	--	11	2	--	--	--	--	--	13
1990-91	--	--	--	1	22	27	7	--	--	--	--	--	57
1991-92	--	--	--	--	27	29	17	--	--	--	--	--	73
1992-93	--	--	--	--	13	31	20	--	--	--	--	--	64

1/ Beginning with 1989-90, includes shipments to Canada and Mexico. 2/ Includes small quantity from Texas.

SOURCE: See Page 45, Data Sources, Item 5.

GRAPEFRUIT AND TANGERINES: Total fresh shipments exported by states of origin,
monthly for crop years 1988-89 through 1992-93

Crop year	Sep	Oct	Nov	Dec	Jan	Feb	Mar	Apr	May	Jun	Jul	Aug	Total
1,000 cartons													
GRAPEFRUIT													
Florida 1/													
1988-89	14	994	1,868	1,544	3,198	4,134	4,728	4,442	2,197	123	--	1	23,243
1989-90 2/	451	2,083	2,065	1,681	1,274	1,913	1,575	264	2	--	--	30	11,338
1990-91	1,379	2,184	2,271	1,876	3,928	3,645	3,573	2,907	697	66	45	--	22,571
1991-92	999	2,678	2,217	1,627	3,786	4,348	4,474	1,101	16	1	--	--	21,247
1992-93	--	82	493	1,722	3,050	4,780	2,717	3,223	967	173	9	--	17,216
Arizona													
1988-89	--	--	--	--	--	--	--	--	3	3	--	--	6
1989-90	--	--	--	--	--	--	--	--	--	--	--	--	--
1990-91	--	--	--	--	--	--	--	--	--	--	--	--	--
1991-92	--	--	--	--	--	--	--	5	--	3	--	--	8
1992-93	--	--	--	--	--	--	--	--	3	3	3	--	9
California													
1988-89	--	--	--	--	--	--	--	--	--	--	5	--	5
1989-90	2	--	--	--	--	--	--	--	--	--	--	--	2
1990-91	--	4	--	--	--	--	--	--	--	--	4	--	8
1991-92	--	--	--	--	--	--	--	--	--	3	5	--	8
1992-93	--	--	--	--	--	--	--	--	--	--	--	--	--
Texas													
1988-89	--	26	67	65	48	79	11	1	--	--	--	--	297
1989-90	--	5	47	214	34	--	--	--	--	--	--	--	300
1990-91	--	--	--	--	--	--	--	--	--	--	--	--	--
1991-92	--	--	--	--	--	--	--	--	--	--	--	--	--
1992-93	--	--	--	--	--	--	--	--	--	--	--	--	--
Total													
1988-89	14	1,020	1,935	1,609	3,246	4,213	4,739	4,443	2,200	126	5	1	23,551
1989-90	453	2,088	2,112	1,895	1,308	1,913	1,575	264	2	--	--	30	11,640
1990-91	1,379	2,188	2,271	1,876	3,928	3,645	3,573	2,907	697	66	49	--	22,579
1991-92	999	2,678	2,217	1,627	3,786	4,348	4,474	1,106	16	7	5	--	21,263
1992-93	--	82	493	1,722	3,050	4,780	2,717	3,223	970	176	12	--	17,225
TANGERINES: Florida 1/													
1988-89	--	--	2	--	3	7	13	6	1	--	--	--	32
1989-90	--	1	19	26	33	11	3	--	--	--	--	--	93
1990-91	2	37	19	8	44	50	20	1	--	--	--	--	181
1991-92	--	26	55	26	53	63	47	1	--	--	--	--	271
1992-93	--	--	18	79	84	77	68	29	--	--	--	--	355

1/ Beginning with 1989-90, includes shipments to Canada and Mexico. 2/ August shipments 1990-91 season.

SOURCE: See Page 45, Data Sources, Item 5.

Footnote 3/ for page 32, 3/ for page 33, and 2/ for page 34. Final Mexican shipments to the U.S. are reported by FAS as a combined total for oranges and tangerines. The totals shown on pages 32 through 34 have been broken down proportionally into oranges and tangerines from Plant Quarantine data reported at the time of the crossing. Plant Quarantine releases give separate totals for these two types of citrus. Mexican shipments through the U.S. to Canada are not included.

CITRUS: U.S. fresh exports, by months, 1992-93

Crop year	Oct	Nov	Dec	Jan	Feb	Mar	Apr	May	Jun	Jul	Aug	Sep	Total
1,000 cartons													
ORANGES 1/													
Canada	504	1,037	744	1,221	1,350	1,694	1,416	1,155	745	377	333	231	10,807
Japan	89	137	331	414	496	1,183	955	1,458	903	936	959	349	8,210
Hong Kong	468	368	466	379	497	760	751	664	674	521	462	429	6,439
Singapore	38	22	30	37	56	107	106	133	138	55	34	32	788
Malaysia	8	4	19	26	39	89	95	124	123	59	18	7	611
Philippines	5	--	--	1	10	93	143	36	69	87	41	14	499
New Zealand	--	4	12	24	49	21	35	10	--	--	--	--	155
Indonesia	1	--	3	6	11	9	10	19	15	8	1	3	86
Australia	--	4	9	13	19	11	--	--	--	--	--	--	56
Republic of Korea	4	1	4	5	5	7	6	6	2	3	7	6	56
Netherlands	1	--	--	3	8	4	18	--	--	--	--	--	34
United Kingdom	--	--	1	1	9	7	5	--	1	--	--	--	24
Others	3	8	22	28	32	38	38	41	33	31	21	21	316
Total	1,121	1,585	1,641	2,158	2,581	4,023	3,578	3,646	2,703	2,077	1,876	1,092	28,081
GRAPEFRUIT													
Japan	820	634	530	803	2,806	1,506	2,258	644	824	1,090	288	174	12,377
Canada	430	423	324	460	385	484	412	294	203	175	135	192	3,897
France	415	235	227	568	556	335	275	189	2	--	1	11	2,814
Netherlands	247	166	196	256	281	164	168	115	--	--	--	19	1,612
Taiwan	--	--	3	31	181	222	229	183	59	73	13	7	1,001
Belgium-Luxembourg	57	20	31	54	193	31	153	263	1	--	--	3	806
Germany	21	131	73	123	143	50	35	17	1	--	1	--	595
United Kingdom	65	66	62	97	104	70	67	46	1	--	--	--	578
Republic of Korea	5	23	18	11	34	75	67	20	4	3	11	6	277
Switzerland	31	17	16	9	35	19	22	9	--	--	--	--	158
Hong Kong	19	17	4	13	8	3	13	20	6	12	9	11	135
Sweden	7	4	5	14	20	1	7	1	6	--	--	--	65
Others	14	39	25	25	29	31	9	10	6	1	2	10	201
Total	2,131	1,775	1,514	2,464	4,775	2,971	3,715	1,811	1,113	1,354	460	433	24,516
TANGERINES													
Canada	22	117	67	97	70	55	18	1	--	1	--	--	448
Netherlands	--	--	--	1	12	2	2	--	--	--	--	--	15
United Kingdom	--	--	--	--	5	4	--	--	--	--	--	--	9
France	--	--	--	1	6	--	--	--	--	--	--	--	7
Australia	--	1	2	--	--	--	--	--	--	--	--	--	3
Others	--	--	--	--	1	1	2	4	--	--	--	--	8
Total	22	118	69	99	94	62	20	5	--	1	--	--	490

1/ Includes Temples.

SOURCE: See Page 45, Data Sources, Item 6.

FLORIDA CITRUS: Certified citrus exports by weeks, crop year 1992-93

Week ended	Oranges		Seedless Grapefruit		Temples	Tangelos 1/	Tan- gerines	Total exports	
	Naval	Other	White	Colored					
1,000 cartons									
Sep	27	--	--	11	2	--	--	13	
Oct	4	1	1	47	72	--	--	121	
	11	4	2	107	163	--	--	276	
	18	4	11	326	467	--	1	811	
	25	20	23	249	516	--	2	815	
Nov	1	19	28	126	452	--	2	635	
	8	27	38	101	329	--	2	511	
	15	24	25	252	231	--	4	552	
	22	82	17	81	392	--	6	588	
	29	97	21	13	240	--	6	383	
Dec	6	74	19	17	190	--	7	318	
	13	32	22	86	213	--	5	369	
	20	24	18	268	388	--	4	716	
	27	3	10	102	166	--	--	286	
Jan	3	8	14	192	199	--	2	423	
	10	13	39	96	345	2	5	513	
	17	33	23	405	535	3	8	1,024	
	24	24	26	441	562	5	5	1,078	
	31	10	38	393	390	5	1	846	
Feb	7	9	24	607	635	11	--	1,298	
	14	7	40	701	625	9	--	1,392	
	21	7	35	696	505	5	--	1,265	
	28	3	45	610	503	3	--	1,182	
Mar	7	3	51	387	539	5	1	1,000	
	14	--	66	434	503	9	--	1,023	
	21	--	36	80	236	2	1	361	
	28	--	39	76	109	1	--	230	
Apr	4	--	59	533	258	--	--	857	
	11	--	54	554	277	--	--	898	
	18	--	62	583	292	--	--	937	
	25	--	62	236	474	--	--	772	
May	2	--	29	118	435	--	--	583	
	9	--	32	62	326	--	--	420	
	16	--	40	13	287	--	--	340	
	23	--	37	7	157	--	--	201	
	30	--	25	3	80	--	--	108	
Jun	6	--	22	3	70	--	--	95	
	13	--	9	10	43	--	--	62	
	20	--	6	4	31	--	--	41	
	27	--	5	1	13	--	--	19	
Jul total	--	3	1	10	--	--	--	14	
Total		528	1,156	9,032	12,260	60	62	278	23,376

1/ Includes K-Early citrus fruit. SOURCE: See Page 45, Data Sources, Item 7.

FLORIDA CITRUS: Certified citrus exports, crop years 1984-85 through 1992-93 1/

Crop year	Oranges			Grapefruit			Specialty fruit			Grand Total
	Commer- cial	Govern- ment	Total	Commer- cial	Govern- ment	Total	Commer- cial	Govern- ment	Total	
1,000 cartons										
1984-85	8	2	10	5,658	6	5,664	--	--	--	5,674
1985-86	202	--	202	11,078	--	11,078	4	--	4	11,284
1986-87	382	--	382	15,479	3	15,482	--	--	--	15,864
1987-88	139	--	139	20,663	13	20,676	76	--	76	20,891
1988-89	154	--	154	23,566	1	23,567	31	--	31	23,752
1989-90	686	--	686	11,419	--	11,419	197	--	197	12,302
1990-91	2,335	--	2,335	22,969	--	22,969	335	2	337	25,641
1991-92	1,674	1	1,675	21,619	1	21,620	440	--	440	23,735
1992-93	1,684	--	1,684	21,286	6	21,292	400	--	400	23,736

1/ Shipments certified in Florida for export to foreign countries other than Canada and Mexico through 1988-89. Canada and Mexico included in export beginning 1989-90. SOURCE: See Page 45, Data Sources, Item 7.

FLORIDA CITRUS: Fresh exports, 1991-92 and 1992-93 crop years

Country	Grapefruit		Oranges 1/		Tangerines		Total	
	1991-92	1992-93	1991-92	1992-93	1991-92	1992-93	1991-92	1992-93
1,000 cartons								
Japan	11,011	9,184	37	12	--	--	11,048	9,196
Canada	2,983	3,809	1,426	1,605	260	238	4,669	5,652
France	3,046	2,486	5	--	--	--	3,051	2,486
Holland	1,479	2,077	24	21	--	--	1,503	2,098
Belgium	953	1,339	4	10	--	--	957	1,349
Taiwan	661	872	182	95	--	--	843	967
England	571	481	16	9	--	--	587	490
Germany	401	449	--	1	--	--	401	450
South Korea	238	238	9	--	--	--	247	238
United Kingdom	34	124	--	--	--	--	34	124
Sweden	57	63	--	--	--	--	57	63
Puerto Rico	5	7	9	12	29	40	43	59
Hong Kong	40	41	90	17	--	--	130	58
Italy	65	49	--	--	--	--	65	49
Singapore	34	31	4	1	--	--	38	32
Russia	--	1	5	13	--	--	5	14
Finland	6	13	1	--	--	--	7	13
Denmark	10	7	1	--	--	--	11	7
Bahama Islands	--	2	--	5	--	--	--	7
Norway	2	6	--	--	--	--	2	6
Iceland	1	2	3	4	--	--	4	6
Bermuda	3	4	--	1	--	--	3	5
Saudi Arabia	--	4	--	--	--	--	--	4
Poland	--	2	--	--	--	--	--	2
Malaysia	--	1	--	--	--	--	--	1
Northern Ireland	2	--	--	--	--	--	2	--
Unknown	10	--	7	--	--	--	17	--
Switzerland	3	--	--	--	--	--	3	--
Hawaii	3	--	--	--	--	--	3	--
Czechoslovakia	2	--	--	--	--	--	2	--
Indonesia	--	--	2	--	--	--	2	--
Cuba	--	--	1	--	--	--	1	--
Total	21,620	21,292	1,826	1,806	289	278	23,735	23,376

1/ Includes Temples, tangelos, and K-Early Citrus Fruit. 2/ 1990-91 figures are for West Germany.

SOURCE: See Page 45, Data Sources, Item 7.

FLORIDA CITRUS: Boxes of fruit processed by weeks, crop years 1991-92 and 1992-93

Week ended	Oranges		Grapefruit		Temple	
	1991-92	1992-93	1991-92	1992-93	1991-92	1992-93
1,000 boxes						
Aug total	--	--	15	--	--	--
Sep	6	--	3	--	--	--
	13	9	19	--	--	--
	20	49	47	--	--	--
	27	72	125	1	--	--
Oct	4	124	1	129	12	--
	11	113	16	118	44	--
	18	211	65	182	154	--
	25	267	170	275	205	--
Nov	1	819	227	222	174	--
	8	1,543	518	366	165	--
	15	2,858	1,386	328	278	--
	22	4,302	3,208	374	197	--
	29	2,846	2,934	202	137	--
Dec	6	6,253	5,851	384	241	1
	13	7,124	6,425	523	328	1
	20	8,044	8,167	567	471	4
	27	4,221	4,541	185	339	2
Jan	3	7,594	7,295	372	512	19
	10	7,218	7,313	731	426	43
	17	6,556	7,303	738	819	61
	24	5,822	8,361	955	804	95
	31	4,495	6,615	1,338	739	169
Feb	7	2,798	8,542	1,700	1,034	222
	14	1,931	7,477	1,937	1,260	203
	21	1,020	6,908	1,562	1,252	303
	28	1,353	6,277	1,272	1,619	195
Mar	7	1,665	4,848	1,168	1,664	84
	14	2,091	4,289	1,002	2,027	42
	21	2,916	3,724	937	2,058	28
	28	3,798	3,600	734	2,313	6
Apr	4	4,272	4,746	457	2,288	4
	11	5,288	4,975	280	1,742	4
	18	5,228	6,033	140	1,715	1
	25	5,423	7,199	64	1,350	4
May	2	5,079	6,693	51	1,114	--
	9	4,496	6,005	7	898	1
	16	3,722	5,644	6	894	--
	23	2,892	5,135	1	844	--
	30	1,794	4,308	5	661	--
Jun	6	724	3,134	2	405	--
	13	670	2,452	1	381	--
	20	376	1,752	1	191	--
	27	40	1,277	3	110	--
Jul	4	21	283	--	57	--
	11	16	38	--	12	--
	18	7	17	--	4	--
	31	36	53	1	16	2
Aug total		52	2	30	39	8
Total		128,248	175,807	19,559	31,994	1,502
						1,553

SOURCE: See Page 45, Data Sources, Item 7.

(Continued)

FLORIDA CITRUS: Boxes of fruit processed by weeks, crop years 1991-92 and 1992-93 (Continued)

Week ended	Tangelos		Tangerines 1/		Honey Tangerines		K-Early		
	1991-92	1992-93	1991-92	1992-93	1991-92	1992-93	1991-92	1992-93	
1,000 boxes									
Sep	6	--	--	--	--	--	--	--	--
	13	--	--	--	--	--	--	--	--
	20	--	--	--	--	--	--	--	--
	27	--	--	1	--	--	--	6	--
Oct	4	1	--	4	--	--	--	2	1
	11	3	--	12	4	--	--	8	6
	18	8	3	14	15	--	--	6	14
	25	25	6	16	17	--	--	2	14
Nov	1	33	9	19	20	--	--	5	5
	8	41	27	16	23	--	--	8	6
	15	48	49	18	21	--	--	9	3
	22	79	76	19	21	--	--	4	3
	29	47	57	10	14	--	--	--	--
Dec	6	124	114	30	27	--	--	1	--
	13	172	112	39	35	--	--	--	--
	20	171	106	47	52	1	--	1	--
	27	69	39	5	13	--	--	--	--
Jan	3	148	123	21	18	8	5	--	--
	10	131	167	23	14	19	24	--	--
	17	96	195	14	6	29	40	--	--
	24	53	225	15	5	25	45	--	--
	31	25	102	4	1	25	28	--	--
Feb	7	6	134	1	1	29	32	--	--
	14	11	66	2	1	37	33	--	--
	21	1	58	--	1	30	41	--	--
	28	--	35	--	--	29	45	--	--
Mar	7	1	21	--	--	27	33	--	--
	14	--	9	--	--	23	37	--	--
	21	--	--	--	--	11	17	--	--
	28	--	--	--	--	6	15	--	--
Apr	4	--	--	--	--	3	15	--	--
	11	--	--	--	--	1	10	--	--
	18	--	--	--	--	--	4	--	--
	25	--	--	--	--	1	1	--	--
May	2	--	--	--	--	--	1	--	--
	9	--	--	--	--	--	--	--	--
	16	--	--	--	--	--	--	--	--
	23	--	--	--	--	--	--	--	--
	30	--	--	--	--	--	--	--	--
Jun	6	--	--	--	--	--	--	--	--
	13	--	--	--	--	--	--	--	--
	20	--	--	--	--	--	--	--	--
	27	--	--	--	--	--	--	--	--
Jul	4	--	1	--	--	--	--	--	--
	31	--	--	--	--	--	--	--	--
Aug total		--	--	--	--	1	--	--	--
Total		1,293	1,734	330	309	305	426	52	52

1/ Robinson, Sunburst, and Dancy varieties. SOURCE: See Page 45, Data Sources, Item 7.

**FLORIDA CITRUS: Distribution of recorded utilization, by types,
by months, crop years 1988-89 through 1992-93**

Crop year	Sep	Oct	Nov	Dec	Jan	Feb	Mar	Apr	May	Jun	Jul	Aug	Total
Percent													
FRESH ORANGE SHIPMENTS													
1988-89	--	--	22	28	9	5	13	11	9	3	--	--	100
1989-90	--	--	34	38	9	6	7	4	2	--	--	--	100
1990-91	--	9	13	19	7	13	14	14	11	--	--	--	100
1991-92	--	18	21	19	8	8	8	10	6	2	--	--	100
1992-93	--	--	23	24	11	6	14	9	9	4	--	--	100
PROCESSED ORANGE USAGE													
1988-89	--	--	2	16	23	15	6	14	17	7	--	--	100
1989-90	--	--	3	19	35	15	10	10	8	--	--	--	100
1990-91	--	4	14	19	17	8	14	15	9	--	--	--	100
1991-92	--	1	9	22	22	6	9	17	12	2	--	--	100
1992-93	--	--	5	17	18	16	11	15	13	5	--	--	100
FRESH GRAPEFRUIT SHIPMENTS													
1988-89	--	4	12	11	13	16	17	16	11	--	--	--	100
1989-90	3	19	18	19	12	15	12	2	--	--	--	--	100
1990-91	6	9	11	12	16	15	15	11	5	--	--	--	100
1991-92	5	13	13	12	16	18	17	6	--	--	--	--	100
1992-93	--	11	10	12	14	18	14	13	6	2	--	--	100
PROCESSED GRAPEFRUIT USAGE													
1988-89	--	1	5	8	10	21	34	14	7	--	--	--	100
1989-90	--	4	6	9	24	37	17	3	--	--	--	--	100
1990-91	1	4	6	9	17	28	19	11	5	--	--	--	100
1991-92	1	5	7	9	19	34	21	4	--	--	--	--	100
1992-93	--	2	3	5	9	16	29	21	12	3	--	--	100
FRESH TANGERINE SHIPMENTS													
1988-89	--	6	15	24	17	16	15	7	--	--	--	--	100
1989-90	--	11	29	39	13	7	1	--	--	--	--	--	100
1990-91	4	16	18	10	20	22	10	--	--	--	--	--	100
1991-92	--	10	18	19	22	19	12	--	--	--	--	--	100
1992-93	--	8	18	24	19	17	11	3	--	--	--	--	100
FRESH TANGELO SHIPMENTS													
1988-89	--	--	28	53	18	1	--	--	--	--	--	--	100
1989-90	--	--	31	60	9	--	--	--	--	--	--	--	100
1990-91	--	8	28	45	17	2	--	--	--	--	--	--	100
1991-92	--	6	32	51	11	--	--	--	--	--	--	--	100
1992-93	--	--	27	49	22	2	--	--	--	--	--	--	100
FRESH TEMPLE SHIPMENTS													
1988-89	--	--	--	--	57	33	10	--	--	--	--	--	100
1989-90	--	--	--	--	26	70	4	--	--	--	--	--	100
1990-91	--	--	--	6	41	38	15	--	--	--	--	--	100
1991-92	--	--	--	--	53	38	9	--	--	--	--	--	100
1992-93	--	--	--	--	42	40	18	--	--	--	--	--	100

CITRUS: Per capita consumption, United States, 1982-83 through 1991-92

Crop Year	Fresh fruit						Juices		
	Oranges & Temples	Grape-fruit	Tangerines & Tangelos	Lemons	Limes	Total 1/	Orange	Other	Total 1/
	Pounds						Gallons, single strength		
1982-83	15.0	7.8	2.3	2.3	0.5	28.0	5.6	0.8	6.4
1983-84	11.9	6.0	2.1	2.2	0.5	22.5	4.5	0.4	4.0
1984-85	11.6	5.5	1.5	2.3	0.6	21.5	5.0	0.8	5.8
1985-86	13.4	6.1	1.6	2.5	0.6	24.2	5.0	0.6	5.6
1986-87	12.8	6.3	1.8	2.5	0.5	23.9	5.2	0.9	6.1
1987-88	13.9	6.7	1.8	2.5	0.6	25.4	5.0	0.5	5.5
1988-89	12.2	6.6	1.7	2.4	0.7	23.5	5.0	0.7	5.7
1989-90	12.4	4.4	1.3	2.6	0.7	21.4	4.3	0.8	5.0
1990-91	8.5	5.9	1.4	2.6	0.8	19.1	4.7	0.6	5.2
1992-93 2/	12.9	5.9	1.9	2.5	1.0	24.3	4.3	0.5	4.9

1/ Some figures may not add due to rounding. 2/ Preliminary.

SOURCE: See Page 45, Data Sources, Item 10.

FLORIDA CITRUS: Frozen concentrated orange juice yields at 42.0 degrees Brix for crop years 1973-74 through 1992-93

Crop year	All orange	Early-midseason	Late
Gallons per box			
1973-74	1.40836	1.37211	1.45700
1974-75	1.42743	1.36005	1.51922
1975-76	1.39917	1.37211	1.43148
1976-77 1/	1.16105	1.17157	1.14028
1977-78	1.33668	1.30720	1.37321
1978-79	1.45540	1.42121	1.49803
1979-80	1.44931	1.41357	1.49639
1980-81 1/	1.25736	1.25888	1.25479
1981-82 1/	1.27730	1.31576	1.21496
1982-83	1.48305	1.41625	1.55933
1983-84 1/	1.28931	1.23692	1.39011
1984-85 1/	1.37578	1.39083	1.35988
1985-86	1.37834	1.35822	1.40629
1986-87	1.50827	1.44643	1.59621
1987-88	1.55342	1.48982	1.64573
1988-89	1.53625	1.47532	1.62816
1989-90 1/	1.22604	1.23446	1.20566
1990-91	1.45383	1.39285	1.55915
1991-92	1.54818	1.46846	1.69608
1992-93	1.57893	1.52480	1.68686

1/ Freeze year.

SOURCE: See page 45, Data Sources, Item 3.

**CITRUS FRUIT: Production, by selected countries, principal types,
crop years 1988-89 through 1992-93**

Country	Crop years				
	1988-89	1989-90	1990-91	1991-92	1992-93 1/
1,000 metric tons 2/					
ORANGES 3/					
Brazil	14,150	12,036	12,362	14,974	13,300
United States 4/	8,272	7,083	7,222	8,176	10,170
Mexico	2,268	1,900	2,300	2,100	3,100
Spain	2,216	2,400	2,590	2,638	2,858
Italy	2,170	2,067	1,760	2,096	2,250
Egypt	1,199	1,397	1,574	1,670	1,690
Morocco	994	775	1,103	780	951
Greece	770	932	819	820	950
Turkey	740	740	735	830	800
South Africa 5/	629	697	648	680	730
Argentina	620	750	600	640	650
Cuba	520	604	600	600	570
Australia	544	458	485	595	553
Israel	546	877	567	513	430
Cyprus	170	223	169	168	170
Uruguay	70	82	122	130	130
Chile	115	115	118	117	117
Gaza 6/	98	171	114	87	87
Japan	NA	54	50	37	41
Total	36,091	33,361	33,938	37,651	39,547
GRAPEFRUIT					
United States 4/	2,580	1,795	2,047	2,018	2,523
Israel	353	373	371	345	370
Cuba	385	264	332	332	315
Argentina	155	190	160	170	180
South Africa 5/	135	124	132	118	130
Mexico	75	95	100	110	118
Cyprus	115	118	119	113	110
Total	3,798	2,959	3,261	3,206	3,746
LEMONS					
Italy	708	667	637	803	830
United States	689	640	652	697	824
Spain	733	660	630	555	690
Argentina	350	400	550	530	560
Turkey	300	335	357	429	400
Greece	170	189	109	120	115
Total	2,950	2,891	2,935	3,134	3,419
TANGERINES					
Japan 7/	2,387	2,375	1,993	1,867	1,986
Spain	1,260	1,084	1,575	1,340	1,495
Italy	411	476	386	470	550
Morocco 10/	420	223	311	280	366
United States 4/ 9/	372	269	259	340	359
Turkey	310	336	345	390	350
Brazil 8/	570	592	570	605	260
Egypt	151	170	220	245	260
Argentina	290	250	200	220	230
Mexico	157	169	170	165	185
Total	6,328	5,944	6,029	5,922	6,041

1/ Forecast. 2/ One metric ton is equivalent to 2,204.6 pounds. 3/ Includes tangerines and Temples in some countries. 4/ U.S. export data adjusted based on import data from Statistics Canada. 5/ Includes some fruit produced in Swaziland, Botswana, Mozambique, and Zimbabwe which is marketed through the South African Citrus board. 6/ Tangerine production is small and is included with oranges. 7/ Mainly satsumas (also called mandarin or unshu mikan), but also including mandarin hybrids. 8/ State of Sao Paulo only, which apparently accounts for over one-half of Brazil's production. About 120,000 tons of tangerines which are processed are included in the orange table. 9/ Includes tangelos, which account for about half of the total production. 10/ Clementines only.

SOURCE: See Page 45, Data Sources, Item 6.

DATA SOURCES

All data in this summary are official statistics of United States Department of Agriculture issued by the National Agricultural Statistics Service, except when another source is shown.

1. United States Department of Commerce
Federal-State Agricultural Weather Service
1408 24th Street, S.E.
Ruskin, Florida 33570
2. Hume, H. Harold, The Cultivation of Citrus Fruits
(New York: The Macmillan Co., 1926) - Data for
1886-27 through 1908-09
3. Florida Citrus Processors Association
P.O. Box 780
Winter Haven, Florida 33882-0780
4. Arizona Agricultural Statistics Service
3003 N. Central Ave. Suite 950
Phoenix, Arizona 85012-2994

California Agricultural Statistics Service
P.O. Box 1258
Sacramento, California 95812

Texas Agricultural Statistics Service
P.O. Box 70
Austin, Texas 78767
5. United States Department of Agriculture
Agricultural Marketing Service
Washington, D.C. 20250
6. United States Department of Agriculture
Foreign Agricultural Service
Washington, D.C. 20250
7. Florida Department of Agriculture and Consumer Services
Division of Fruit and Vegetable
P.O. Box 1072
Winter Haven, Florida 33880
8. Citrus Administrative Committee
P.O. Box 24508
Lakeland, Florida 33802-4508
9. Florida Citrus Mutual
P.O. Box 89
Lakeland, Florida 33802
10. United States Department of Agriculture
Economic Research Service
1301 New York Avenue, N.W.
Washington, D.C. 20005-4789
11. National Weather Service
SE Ag Weather Service Center
Fisheries Annex Bldg.
P.O. Box 2246
Auburn, AL 36831-2246